

MercuryFlex

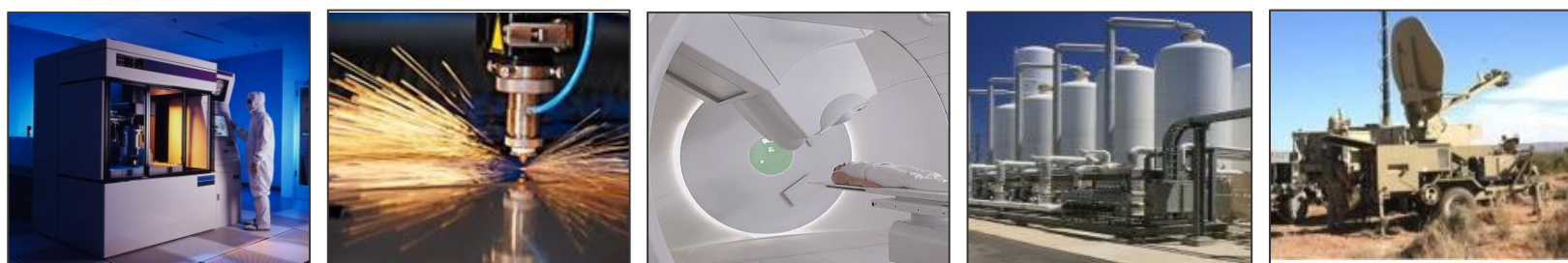
Flexibility for Demanding Applications



- ✓ Programmable Outputs:
 - 0-28V, 0-56V, 0-125V, 0-180V, 0-250V, 0-450V
 - Variable or fixed output
- ✓ Voltage, Current or Power Source
- ✓ Analog or digital control
 - Local or remote control
- ✓ Scalable- parallel up to 500kW
- ✓ Highly maintainable
 - Hot-Swap compatible
- ✓ Highly Reliable
 - 100% HASS testing
- ✓ Multiple Input Configurations

APPLICATIONS

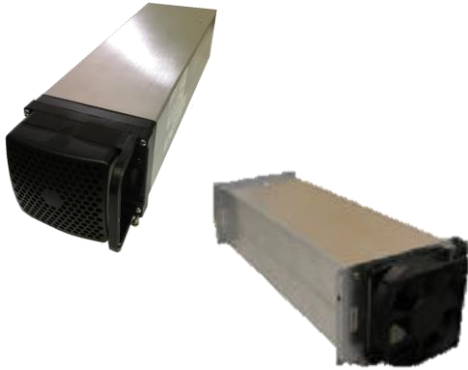
Semiconductor Fabrication Equipment | RF Amplifiers | Sonar | Radar | Beam Steering | Industrial Process Heating | Metrology | Lithography | UV Curing | Advanced Packaging | Laser & Light Sources | Industrial Gas Generation | Test Equipment | Motion Control



PROTECT. ENHANCE. SAVE.

The Product Line

MercuryFlex- 3.8kW Power Module



- Programmable Outputs: 0-28V, 0-56V, 0-125V, 0-180V, 0-250V, 0-450V
- Constant Voltage, Constant Current, Constant Power
- Blind-mate shelf mount or embedded version
- Operates from 90-264VAC Input
- Parallel up to 15.2kW in a 2U high, 19" rack shelf
- High speed CANBus control, shelf level Ethernet
- Module Dimensions: 4.25" x 3.42" x 15.15"

PowerNode- 10kW MercuryFlex Power System



- LCD touch display with local setting lockout
- Operates from 208 3-phase VAC input
- CANbus, Ethernet or Analog Control
- Dimensions: 19" x 20.84 x 3.46"

High Voltage Shelf- 22.8kW MercuryFlex System



- Operates from 350-528VAC 3-phase input
- High-speed CANBus control
- Dimensions: 19" x 20.84 x 6.92"

M3PHV- Military MercuryFlex System



- Supports MIL-STD 810G, MIL-STD 461/464, MIL-STD-1399/300B
- Operates from 380/440/480 VAC 3-Phase Input
- CANbus, Ethernet or Analog Control
- Dimensions: 19" x 24.25 x 10.46"