

# DSC1000-3

## High Performance Dual Stage Power Line Filters

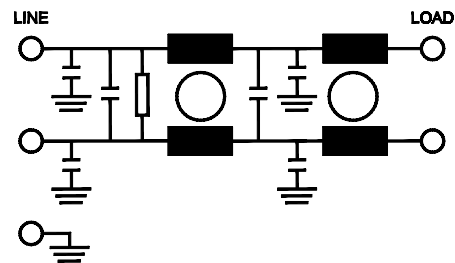


### 16 A Chassis Mount Filter

#### Specifications

Operating Frequency	50/60 Hz
Usable Frequency	DC - 400 Hz
Max. Operating Voltage*	250 V +10%
Rated Current	16 A
Ambient Temperature	-25 to 40°C
Climatic Category	25/100/21
Hipot Rating (L-G)	2700 VDC
Terminals (-T)	QD: 0.25 Tabs
Safety Approvals	cURus, EN60939
Typ. Weight, lbs (kg)	0.8 (0.4)

\*Available up to 300 VAC. Please contact us to verify specifications.



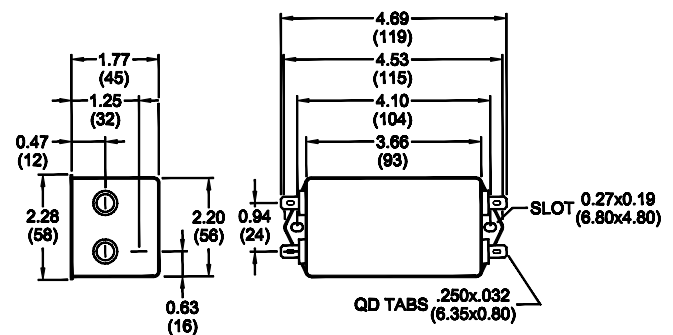
#### Part Number/Ordering

DSC1000-3	-Y (Ycap, Center, nF)	-Z (Ycap, Line, nF)	-T	120 V/60 Hz (LK, mA)	250 V/60 Hz (LK, mA)
	0	0	QD	0.0	0.0
	0.47	0.47		0.08	0.16
	1	1		0.18	0.35
	2.2	2.2		0.4	0.8
	4.7	4.7		0.8	1.6
	10	10		1.8	3.5

**Note:** Use any combination of -Y and -Z

#### Mechanical Dimensions

TYPICAL TOLERANCE: +/-0.02" (0.50 mm)



#### Typical Insertion Loss, dB (50/50 Ohm)

Freq (MHz)	0.15	0.5	1.0	10	30
CM(dB)	46	64	70	70	60
DM(dB)	36	60	65	70	70

Specifications are subject to change. Consult factory to verify specifications.

For more information on our filter products call us at +1.908.850.5088 or Toll Free at +1.866.641.3310

LCR, Radius Power, and Filter Concepts are now part of Astrodyne TDI

[www.AstrodyneTDI.com](http://www.AstrodyneTDI.com)