

LCR 085

General Purpose Filtered Power Entry Modules with Switch



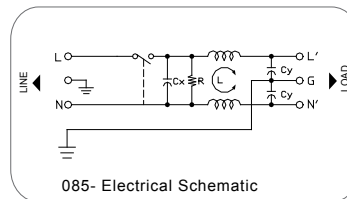
Features

Compact IEC inlet power entry modules with integrated SPST on/off switch. QD tabs and other terminal options available.

Typical Applications

Compact electronic equipment, 1U rack assemblies.

Electrical Schematic



Specifications

Rated Voltage Max. (V)	250 VAC Max.
Rated Current (A)	1-10 A @ 40°C
Operating Frequency (Hz)	50/60 Hz
Hipot Rating	
Line to Line	1450 VDC
Line to Ground	2250 VDC
Case	Plated Steel
Packaging Quantity	126 Pcs per Carton

Leakage Current	
@ 250 VAC 50 Hz	0.42 mA Max.
@ 115 VAC 60 Hz	0.23 mA Max.
IP Class	IP51
Climatic Category	25/85/21

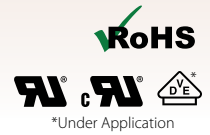
Model No.	Rated Current (A) @ 40°C	Unit Weight (g)	Terminal Options	
			In	Out
085.00101.00	1	63	IEC Inlet Socket	QD 6.35*0.8
085.00301.00	3	63	IEC Inlet Socket	QD 6.35*0.8
085.00601.00	6	65	IEC Inlet Socket	QD 6.35*0.8
085.01001.00	10	65	IEC Inlet Socket	QD 6.35*0.8

Specifications are subject to change. Consult factory to verify specifications.

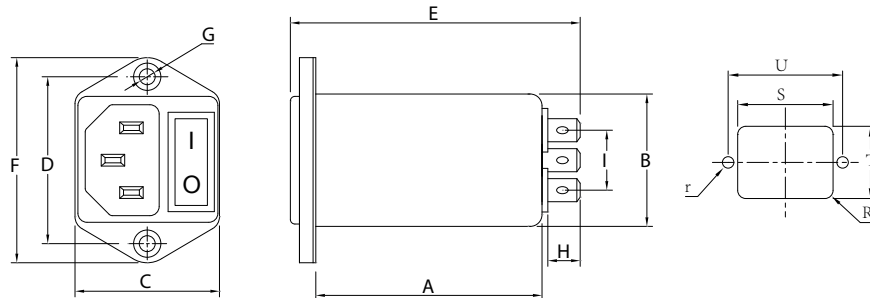
For more information on our filter products call us at: (800) 527-4362 or (714) 289-0055
LCR, Radius Power, and Filter Concepts are now part of Astrodyne TDI

LCR 085

General Purpose Filtered Power Entry Modules with Switch



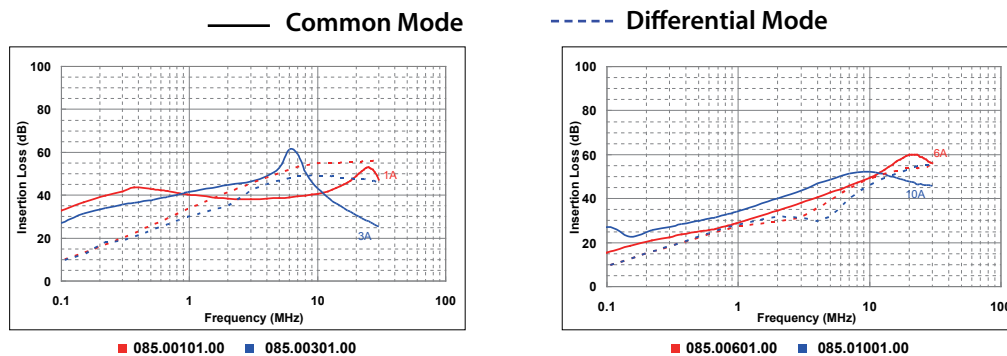
LCR 085 Mechanical Outlines



LCR 085 Mechanical Dimensions (mm)

Model No.	A	B	C	D	E	F	G	H	I	R	S	T	U	r
085.00101.00	50.9	28.5	33	36	67	44	2*4.0	8.8	12	3	29.5	33.5	36.1	2.1
085.00301.00	50.9	28.5	33	36	67	44	2*4.0	8.8	12	3	29.5	33.5	36.1	2.1
085.00601.00	50.9	28.5	33	36	67	44	2*4.0	8.8	12	3	29.5	33.5	36.1	2.1
085.01001.00	50.9	28.5	33	36	67	44	2*4.0	8.8	12	3	29.5	33.5	36.1	2.1

LCR 085 Insertion Loss in dB Measured in a 50 Ω System



Specifications are subject to change. Consult factory to verify specifications.

For more information on our filter products call us at: (800) 527-4362 or (714) 289-0055
 LCR, Radius Power, and Filter Concepts are now part of Astrodyne TDI