

# RP182CD

## High Performance IEC Inlet Dual Stage Power Line Filters



### High Performance 3 A to 10 A Power Entry Filters



Operating Frequency	50/60 Hz
Max. Operating Voltage	250 V +10%
Ambient Temperature	-25 to 40°C
Climatic Category	25/100/21
Hipot Rating (L-G)	2200 VDC
Terminals (-T)	QD: 0.25 Tabs
Safety Approvals	CSA, UR, EN60939
Typ. Weight, lbs (kg)	0.5 (0.2)

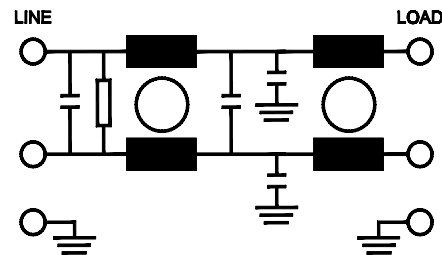
### Part Number/Ordering

RP182CD	-X (Amps)	-Y (Ycap, nF)	-T
	3	0	QD
	6	0.47	
	10	2.2	
		3.3	
		4.7	

**Note:** Use any combination of -Y with any -X (Amps) rating  
e.g. RP182CD-3-4.7-QD (3 Amps with 4.7 nF Ycap)

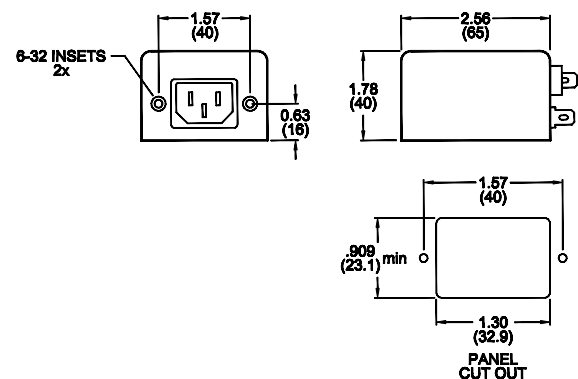
### Typical Insertion Loss, dB (50/50 Ohm)

Freq (MHz)	0.15	0.5	1.0	10	30
<b>3 Amp</b>					
CM(dB)	55	60	70	60	35
DM(dB)	30	70	56	56	60
<b>6 Amp</b>					
CM(dB)	48	56	60	55	40
DM(dB)	16	50	60	55	60
<b>10 Amp</b>					
CM(dB)	48	55	62	55	40
DM(dB)	16	50	65	65	68



### Mechanical Dimensions

TYPICAL TOLERANCE: +/-0.02" (0.50 mm)



### Leakage Current

Y-cap, nF	mA, 120 V/60 Hz	mA, 250 V/60 Hz
0	0.0	0.0
0.47	0.04	0.08
2.2	0.2	0.4
3.3	0.3	0.6
4.7	0.4	0.8

Specifications are subject to change. Consult factory to verify specifications.

For more information on our filter products call us at: (800) 527-4362 or (714) 289-0055  
LCR, Radius Power, and Filter Concepts are now part of Astrodyne TDI