

# RP182CS

## High Performance IEC Inlet Single Stage Power Line Filters



### High Performance 3 A to 10 A Power Entry Filters

#### Specifications

Operating Frequency	50/60 Hz
Max. Operating Voltage	250 V +10%
Ambient Temperature	-25 to 40°C
Climatic Category	25/100/21
Hipot Rating (L-G)	2200 VDC
Terminals (-T)	QD: 0.25 Tabs
Safety Approvals	CSA, UR, EN60939
Typ. Weight, lbs (kg)	0.5 (0.2)

#### Part Number/Ordering

RP182CS	-X (Amps)	-Y (Ycap, nF)	-T
	3	0	QD
	6	0.47	
	10	2.2	
		3.3	
		4.7	

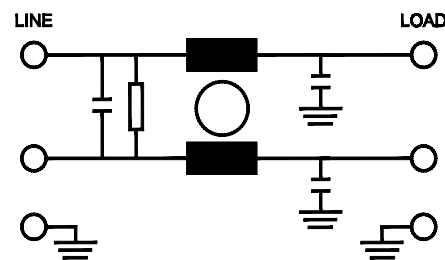
**Note:** Use any combination of -Y with any -X (Amps) rating  
e.g. RP182CS-3-4.7-QD (3 Amps with 4.7 nF Ycap)

#### Typical Insertion Loss, dB (50/50 Ohm)

Freq (MHz)	0.15	0.5	1.0	10	30
<b>3 Amp</b>					
CM(dB)	35	55	60	60	55
DM(dB)	15	60	70	65	65
<b>6 Amp</b>					
CM(dB)	35	55	60	60	55
DM(dB)	30	60	70	60	60
<b>10 Amp</b>					
CM(dB)	35	55	60	60	55
DM(dB)	20	60	70	65	65

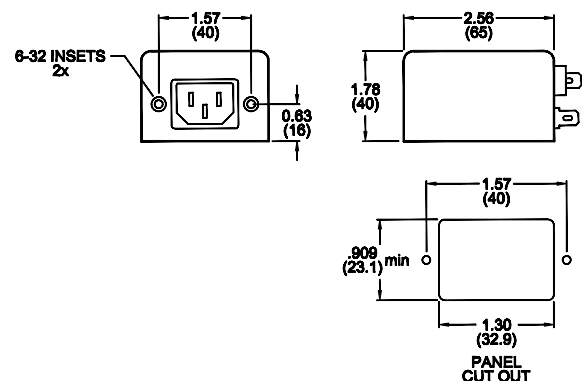


#### Electrical Schematic



#### Mechanical Dimensions

TYPICAL TOLERANCE: +/-0.02 (0.50 mm)



#### Leakage Current

Y-cap, nF	mA, 120 V/60 Hz	mA, 250 V/60 Hz
0	0.0	0.0
0.47	0.04	0.08
2.2	0.2	0.4
3.3	0.3	0.6
4.7	0.4	0.8

Specifications are subject to change. Consult factory to verify specifications.

For more information on our filter products call us at: (800) 527-4362 or (714) 289-0055  
LCR, Radius Power, and Filter Concepts are now part of Astrodyne TDI

**Astrodyne TDI**  
Now you have power.

[www.AstrodyneTDI.com](http://www.AstrodyneTDI.com)