

RP2180 Series

Ultra Compact Single Stage Power Line Filters



1 A to 10 A Chassis Mount Filter

Specifications

Operating Frequency	50/60 Hz
Usable Frequency	DC - 400 Hz
Max. Operating Voltage*	250 V +10%
Ambient Temperature	-25 to 40°C
Climatic Category	25/100/21
Hipot Rating (L-G)	2700 VDC
Terminals (-T)	QD: 0.25 Tabs
Safety Approvals	cURus, EN60939
Typ. Weight, lbs (kg)	0.04 (0.02)

*Available up to 300 VAC. Please contact us to verify specifications.

Part Number/Ordering

RP2180	-X (Amps)	-Y (Ycap, nF)	-T
	1	0	QD
	3	0.47	
	6	1	
	10	2.2	
		4.7	

Note: Use any combination of -Y with any -X (Amps) rating
e.g. RP2180-6-4.7-QD (6 Amps with 4.7 nF Ycap)

Typical Insertion Loss, dB (50/50 Ohm)

Freq (MHz)	0.15	0.5	1.0	10	30
1 Amp					
CM(dB)	46	55	55	55	40
DM(dB)	12	26	50	50	44
3 Amp					
CM(dB)	30	40	55	55	60
DM(dB)	12	22	32	50	45
6 Amp					
CM(dB)	22	35	42	55	60
DM(dB)	12	22	28	50	44
10 Amp					
CM(dB)	10	20	26	50	60
DM(dB)	12	20	26	50	50

Specifications are subject to change. Consult factory to verify specifications.

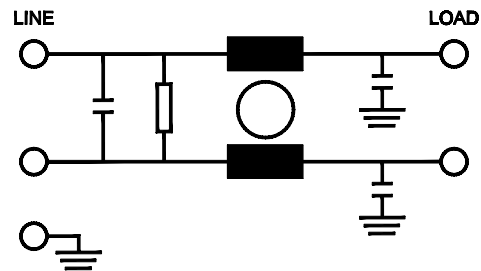
For more information on our filter products call us at +1.908.850.5088 or Toll Free at +1.866.641.3310

LCR, Radius Power, and Filter Concepts are now part of Astrodyne TDI

www.AstrodyneTDI.com

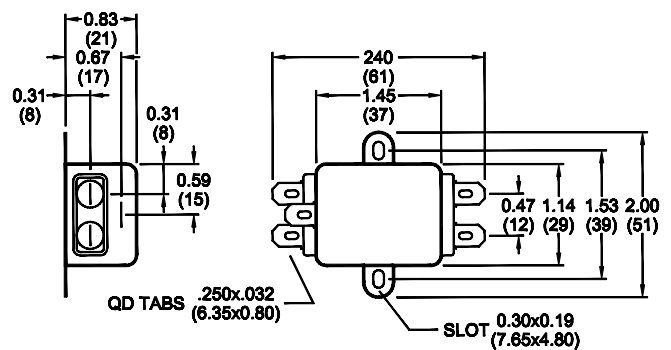


Electrical Schematic



Mechanical Dimensions

TYPICAL TOLERANCE: +/-0.02" (0.50 mm)



Leakage Current

Y-cap, nF	mA, 120 V/60 Hz	mA, 250 V/60 Hz
0	0.0	0.0
0.47	0.04	0.08
1	0.09	0.18
2.2	0.2	0.4
4.7	0.4	0.8