

RP220 Series

High Performance Dual Stage Power Line Filters



6 A to 20 A Chassis Mount Filter

Specifications

Operating Frequency	50/60 Hz
Usable Frequency	DC - 400 Hz
Max. Operating Voltage*	250 V +10%
Ambient Temperature	-25 to 40°C
Climatic Category	25/100/21
Hipot Rating (L-G)	2700 VDC
Terminals (-T)	QD: 0.25 Tabs
Safety Approvals	cURus, EN60939
Typ. Weight, lbs (kg)	0.8 (0.4)

*Available up to 300 VAC. Please contact us to verify specifications.

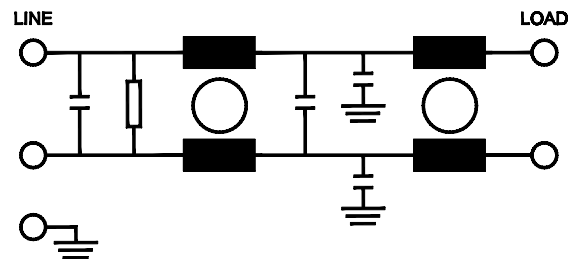
Part Number/Ordering

RP220	-X (Amps)	-Y (Ycap, nF)	-T
	6	0	QD
	10	0.47	
	12	1	
	16	2.2	
	20	4.7	
		10	

Note: Use any combination of -Y with any -X (Amps) rating
e.g. RP220-10-10-QD (10 Amps with 10 nF Ycap)

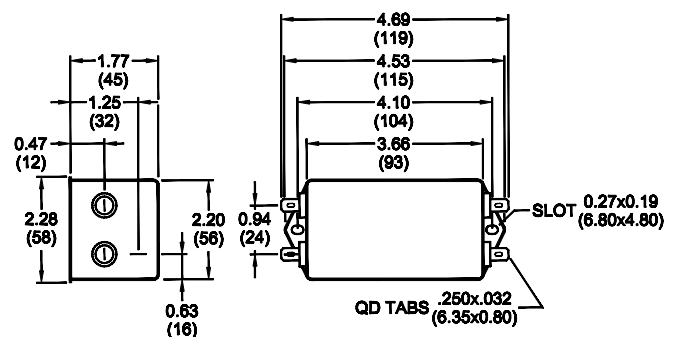


Electrical Schematic



Mechanical Dimensions

TYPICAL TOLERANCE: +/-0.02" (0.50 mm)



Specifications are subject to change. Consult factory to verify specifications.

For more information on our filter products call us at: +1.908.850.5088 or Toll Free at +1.866.641.3310

LCR, Radius Power, and Filter Concepts are now part of Astrodyne TDI

www.AstrodyneTDI.com

RP220 Series

High Performance Dual Stage Power Line Filters



6 A to 20 A Chassis Mount Filter

Typical Insertion Loss, dB (50/50 Ohm)

Freq (MHz)	0.15	0.5	1.0	10	30
6 Amp					
CM(dB)	60	70	70	52	50
DM(dB)	50	60	68	60	60
10 Amp					
CM(dB)	55	70	70	50	50
DM(dB)	45	60	60	70	65
12 Amp					
CM(dB)	56	70	70	50	50
DM(dB)	45	60	68	60	60
16 Amp					
CM(dB)	42	65	70	55	50
DM(dB)	36	60	65	65	60
20 Amp					
CM(dB)	40	65	70	52	40
DM(dB)	34	58	60	65	60

Leakage Current

Y-cap, nF	mA, 120 V/60 Hz	mA, 250 V/60 Hz
0	0.0	0.0
0.47	0.04	0.08
1	0.09	0.18
2.2	0.2	0.4
4.7	0.4	0.8
10	0.9	1.8

Specifications are subject to change. Consult factory to verify specifications.

For more information on our filter products call us at: +1.908.850.5088 or Toll Free at +1.866.641.3310

LCR, Radius Power, and Filter Concepts are now part of Astrodyne TDI

www.AstrodyneTDI.com