

# RP680 Series

## Compact High Current DC EMI Power Line Filters



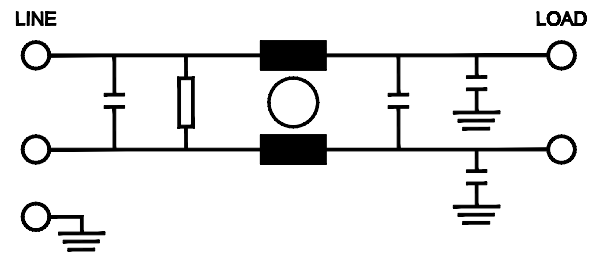
250 A to 1000 A, 600 VDC with Busbars

### Specifications

Max. Operating Voltage	600 VDC
Ambient Temperature	-25 to 55°C
Climatic Category	25/100/21
Hipot Rating (L-G)	3500 VDC
Terminals (-T)	B: 250 A (3x20) 320/400 A (6x25) 600 A (8x25) 800/1000 A (8x40)
Safety Approvals	cURus, EN60939 (Pending)



### Electrical Schematic



### Part Number/Ordering

RP680	-X (Amps)	-Y (Ycap, nF)	-T	Typ. Weight, lbs (kg)
	250	100	B	20.0 (9.1)
	320	1000		20.0 (9.1)
	400	2000		20.0 (9.1)
	600			20.0 (9.1)
	800			25.0 (11.3)
	1000			25.0 (11.3)

**Note:** Use any combination of -Y with any -X (Amps) rating  
e.g. RP680-600-100-B (600 Amps with 100nF Ycap)

### Typical Insertion Loss, dB (50/50 Ohm)

Freq (MHz)	0.15	0.5	1.0	10	30
CM(dB)	66	66	66	40	24
DM(dB)	40	60	45	30	28

Specifications are subject to change. Consult factory to verify specifications.

For more information on our filter products call us at: +1.908.850.5088 or Toll Free at +1.866.641.3310

LCR, Radius Power, and Filter Concepts are now part of Astrodyne TDI

[www.AstrodyneTDI.com](http://www.AstrodyneTDI.com)

# RP680 Series

## Compact High Current DC EMI Power Line Filters

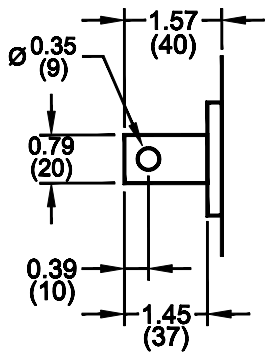


250 A to 1000 A, 600 VDC with Busbars

### Mechanical Dimensions

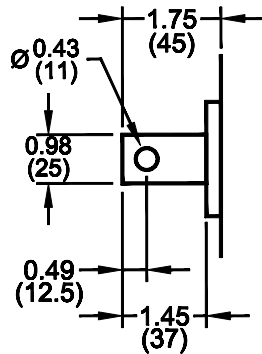
TYPICAL TOLERANCE: +/-0.02" (0.50 mm)

250 AMP BUS BAR DETAIL



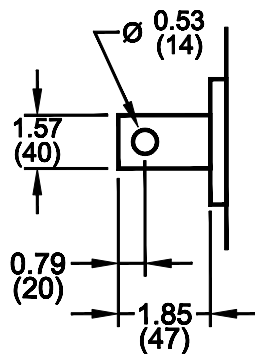
250 A BUS BAR: 3x20

400/600 AMP BUS BAR DETAIL



320/400 A BUS BAR: 6x25  
600 A BUS BAR: 8x25

800/1000 AMP BUS BAR DETAIL



250/320/400/600 Amp

