

RPM7000 Series

MIL/COTS AC, Single Phase EMI Power Line Filters

5 A to 50 A, 47-400 HZ MIL-STD-461/DO-160

Specifications

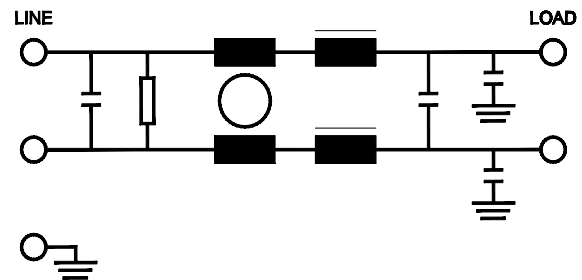
Operating Frequency	47-400 Hz
Max. Operating Voltage	300 VAC
Ambient Temperature	-40 to 70°C
Hipot Rating (L-G)	1800 VDC
Terminals (-T)	S: 5/10/20/30 A (M5) 50 A (M6)
Typical Leakage Current	3.5 mA/Line (250 V/60 Hz)
Applications	Mil-461/DO-160

Note:

Call for other termination types (e.g. Circular Mil-Connectors, etc.)
Leakage current is determined by the line to ground capacitors in the filter. The capacitors can be easily varied to match the system leakage requirements.



Electrical Schematic



Part Number/Ordering

RPM7000	-X (Amps)	-T	Typ. Weight, lbs (kg)
	5	S	0.4 (0.2)
	10		0.4 (0.2)
	20		2.7 (1.2)
	30		2.7 (1.2)
	50		3.7 (1.7)

Typical Insertion Loss, dB (50/50 Ohm)

Freq (MHz)	0.01	0.15	0.5	1.0	10	30
CM(dB)	16	32	50	50	45	30
DM(dB)	22	42	60	60	40	30

Specifications are subject to change. Consult factory to verify specifications.

For more information on our filter products call us at: +1.908.850.5088 or Toll Free at +1.866.641.3310

LCR, Radius Power, and Filter Concepts are now part of Astrodyne TDI

www.AstrodyneTDI.com

RPM7000 Series

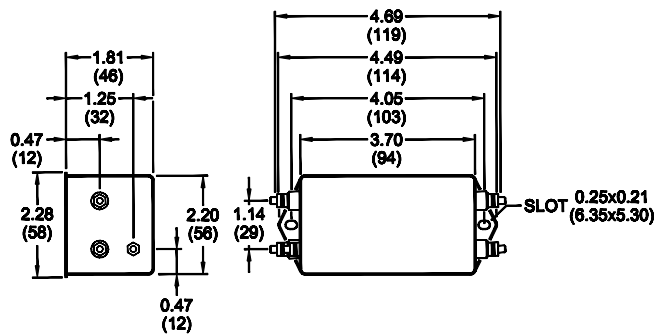
MIL/COTS AC, Single Phase EMI Power Line Filters

5 A to 50 A, 47-400 HZ MIL-STD-461/DO-160

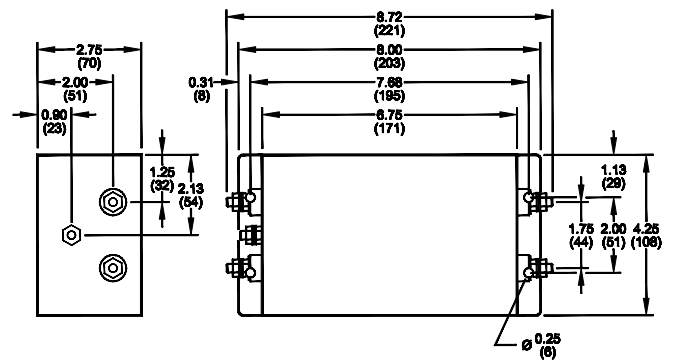
Mechanical Dimensions

TYPICAL TOLERANCE: +/-0.02" (0.50 mm)

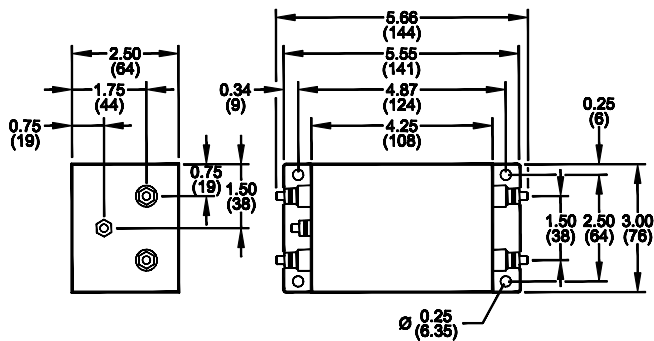
5/10 Amp



50 Amp



20/30 Amp



Specifications are subject to change. Consult factory to verify specifications.

For more information on our filter products call us at: +1.908.850.5088 or Toll Free at +1.866.641.3310

LCR, Radius Power, and Filter Concepts are now part of Astrodyne TDI

www.AstrodyneTDI.com