

RPM7050 Series

MIL/COTS AC, Single Phase, 1 U Height EMI Power Line Filters

5 A to 30 A, MIL-STD-461/ DO-160 1 U Height

Specifications

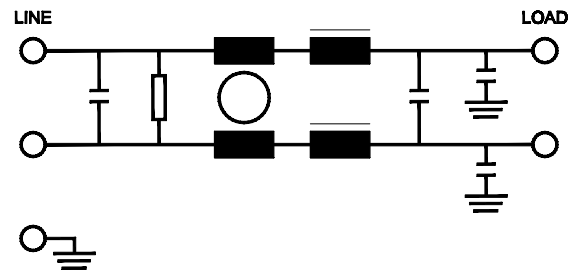
Operating Frequency	50/60/400 Hz
Max. Operating Voltage	300 VAC
Ambient Temperature	-40 to 70°C
Hipot Rating (L-G)	1800 VDC
Terminals (-T)	S: M5 Studs
Typical Leakage Current	3.5 mA/Line (250 V/60 Hz)
Applications	Mil-461/ DO-160
Typ. Weight, lbs (kg)	1.5 (0.7)

Note:

Call for other termination types (e.g. Circular Mil-Connectors, etc.)
Leakage current is determined by the line to ground capacitors in the filter. The capacitors can be easily varied to match the system leakage requirements.



Electrical Schematic



Part Number/Ordering

RPM7050	-X (Amps)	-T
	5	S
	10	
	20	
	30	

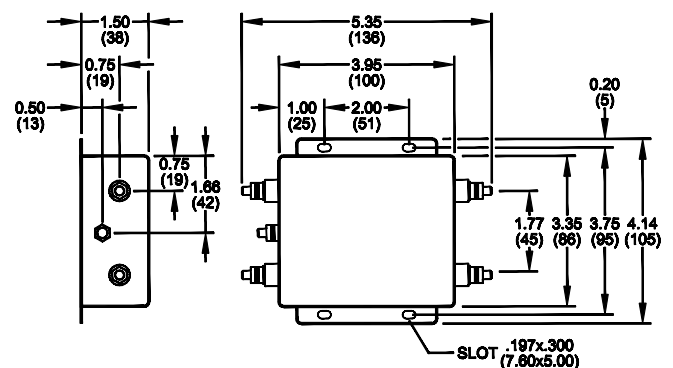
Typical Insertion Loss, dB (50/50 Ohm)

Freq (MHz)	0.01	0.15	0.5	1.0	10	30
CM(dB)	16	32	50	50	45	30
DM(dB)	22	42	60	60	40	30

Mechanical Dimensions

TYPICAL TOLERANCE: +/-0.02" (0.50 mm)

5/10/20/30 Amp



Specifications are subject to change. Consult factory to verify specifications.

For more information on our filter products call us at +1.908.850.5088 or Toll Free at +1.866.641.3310

LCR, Radius Power, and Filter Concepts are now part of Astrodyne TDI

www.AstrodyneTDI.com