

# RPM9000 Series

## MIL/COTS AC, Single Phase IEC Inlet EMI Power Line Filters

5 A to 20 A, IEC 320 Inlet Style MIL-STD-461/DO-160

### Specifications

Operating Frequency	50/60 Hz
Max. Operating Voltage	250 VAC
Ambient Temperature	-25 to 55°C
Hipot Rating (L-G)	1800 VDC
Terminals (-T)	Q: 0.25x0.032 QDS
Typical Leakage Current	<3.5 mA
Applications	Mil-461/DO-160



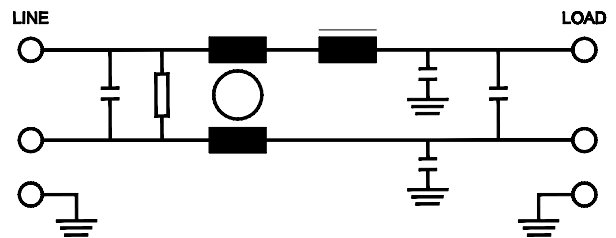
### Part Number/Ordering

RPM9000	-X (Amps)	-T	Typ. Weight, lbs (kg)
	5	QD	0.5 (0.2)
	10		0.5 (0.2)
	15		0.5 (0.2)
	20		0.8 (0.4)

### Typical Insertion Loss, dB (50/50 Ohm)

Freq (MHz)	0.01	0.15	0.5	1.0	10	1000	10000
CM(dB)	16	38	50	60	50	45	35
DM(dB)	28	45	60	60	60	-	-

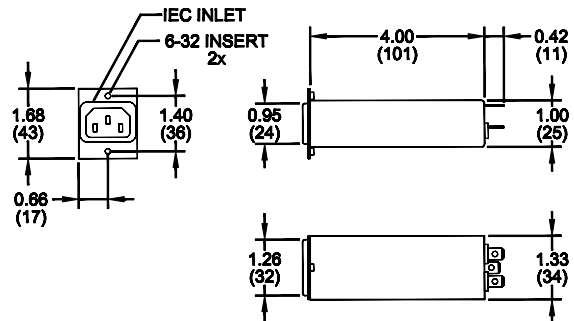
### Electrical Schematic



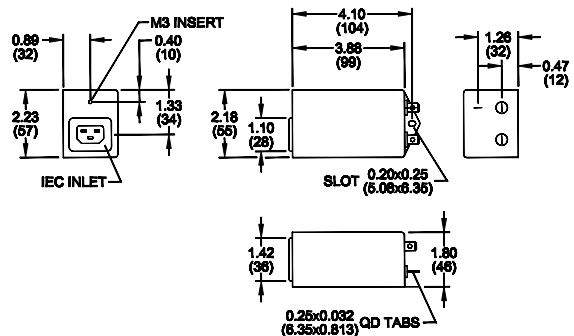
### Mechanical Dimensions

TYPICAL TOLERANCE: +/-0.02" (0.50 mm)

#### 5/10/15 Amp



#### 20 Amp



Specifications are subject to change. Consult factory to verify specifications.

For more information on our filter products call us at: +1.908.850.5088 or Toll Free at +1.866.641.3310

LCR, Radius Power, and Filter Concepts are now part of Astrodyne TDI

[www.AstrodyneTDI.com](http://www.AstrodyneTDI.com)