

RPT5510 Series

TEMPEST/COTS AC EMI Power Line Filters

5 A to 25 A, Performance to 10 GHz 70 dB

Specifications

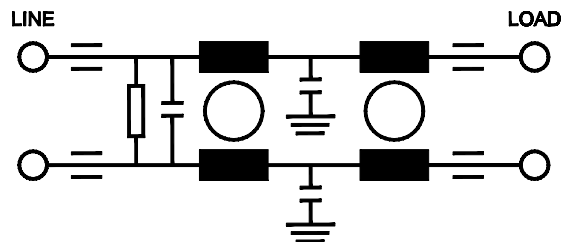
Operating Frequency	50/60/400 Hz
Max. Operating Voltage	300 VAC
Ambient Temperature	-40 to 70°C
Hipot Rating (L-G)	1500 VDC
Terminals (-T)	S: M5
Applications	TEMPEST/Mil-461/DO-160
Leakage Current	3.5 mA/Line (250 V/60 Hz)

Note:

Call for other termination types (e.g. Circular Mil Connectors, etc.)
 Leakage current is directly related to the line-ground caps in the filter. If higher leakage current is allowed, the caps can be increased to improve the low frequency insertion loss.



Electrical Schematic



Part Number/Ordering

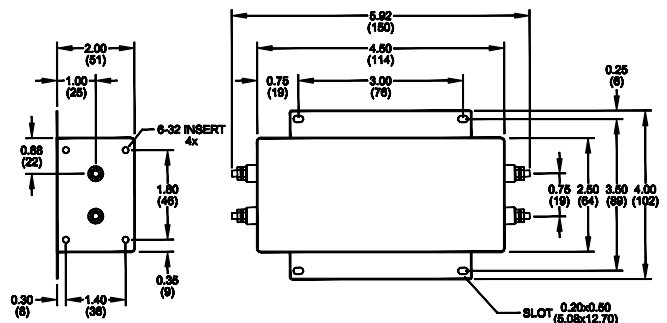
RPT5510	-X (Amps)	-T	Typ. Weight, lbs (kg)
	5	S	1.4 (0.6)
	10		1.4 (0.6)
	15		1.8 (0.8)
	25		2.2 (1.0)

Typical CM Insertion Loss, 50 ohm

14 KHz	10 dB
100 KHz	40 dB
500 KHz	60 dB
1 MHz-10 GHz	70 dB

Mechanical Dimensions

TYPICAL TOLERANCE: +/-0.02" (0.50 mm)



Specifications are subject to change. Consult factory to verify specifications.

For more information on our filter products call us at +1.908.850.5088 or Toll Free at +1.866.641.3310

LCR, Radius Power, and Filter Concepts are now part of Astrodyne TDI

www.AstrodyneTDI.com