

# RPTC2012-60

## TEMPEST/COTS AC 3-Phase WYE EMI Power Line Filter

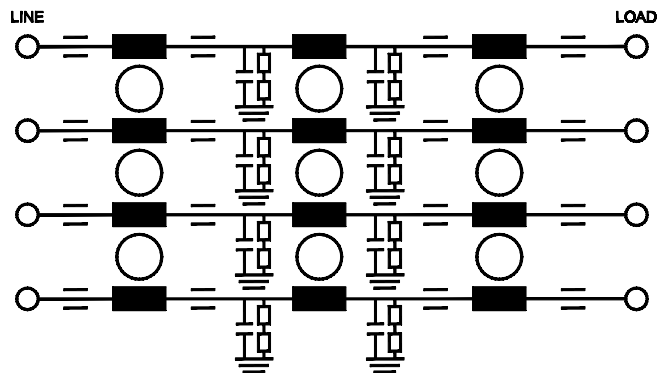
60 A, 480 V, 100 dB 14 K - 10 GHz

### Specifications

Operating Frequency	47-63 Hz
Max. Operating Voltage	480 VAC
Ambient Temperature	-40 to 70°C
Hipot Rating (L-G)	1500 VDC
Terminals (-T)	S: 1/4-20
Applications	TEMPEST/Mil-461/DO-160
Typ. Weight, lbs (kg)	50.00 (22.68)

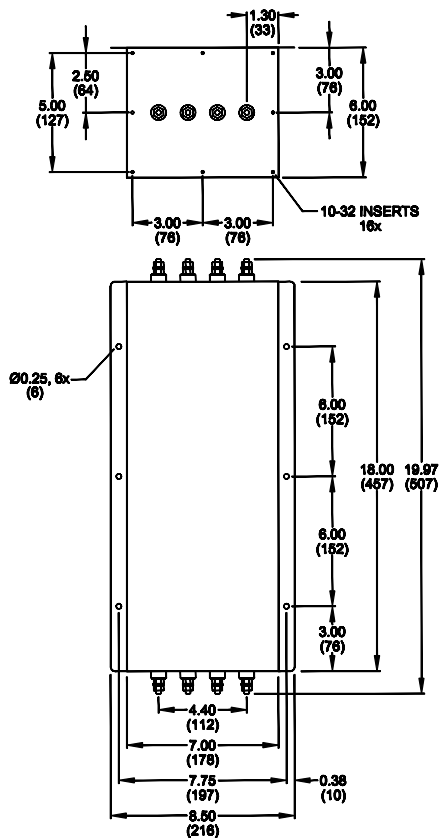


### Electrical Schematic



### Mechanical Dimensions

TYPICAL TOLERANCE: +/-0.02" (0.50 mm)



Specifications are subject to change. Consult factory to verify specifications.

For more information on our filter products call us at: +1.908.850.5088 pr Toll Free at +1.866.641.3310

LCR, Radius Power, and Filter Concepts are now part of Astrodyne TDI

[www.AstrodyneTDI.com](http://www.AstrodyneTDI.com)