

# LCR F1960

## Facility/Shielded Room Power Line Filters, Single and Dual Line, 14 KHz

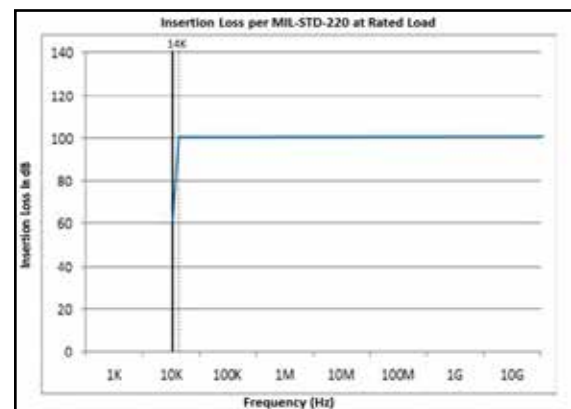


Astrodyne TDI EMI filter capabilities can help your products meet all the EMC requirements and achieve "mission success" in critical applications. We are a global leader in EMI filters offering advance filter design, engineering, manufacturing, testing and technical support.

### Features

- Attenuation (insertion loss) is 100 dB @ 14 KHz to 10 GHz measured according to MIL-STD-220.
- Filter insertion loss will extend to 40 GHz when installed with proper EMI shielding and isolation.
- Filters can be supplied with various levels of transient voltage protection (EMP, HEMP, and HERF).
- Filter cabinets supplied with two separate removable covers to access input and output terminals. The output compartment is supplied with an EMI (RF) non-corrosive, environmental gasket to prevent RF leakage and accommodate maximum isolation between input and output compartments. The input compartment is supplied with a moisture resistant gasket.
- Astrodyne TDI power line filters comply with all the applicable requirements of MIL-PRF-15733 latest revision, MIL-STD 810 and UL 1283.
- Bleeder resistors are built into each filter line to discharge the capacitor voltage to ground potential during power shutdown.
- Designed to operate continuously at rated currents and voltages, and are capable of withstanding a 40% current overload for 15 minutes without degradation.
- Voltage drop across each filter line at room temperature and full rated current is less than 1%.
- Electrical specifications - 120/208 or 277/480 VAC, 50/60 Hz \*\*
- Finish: yellow zinc chromate plating (conductive) with gray enamel paint, no paint on rear mounting surface.

\*\* Filters up to 75 A can be used in 400 Hz application for max line voltage of 120/208 VAC when used with external power factor correction coil. Above 75 A, filters require slight modification, please contact us.



Specifications are subject to change. Consult factory to verify specifications.

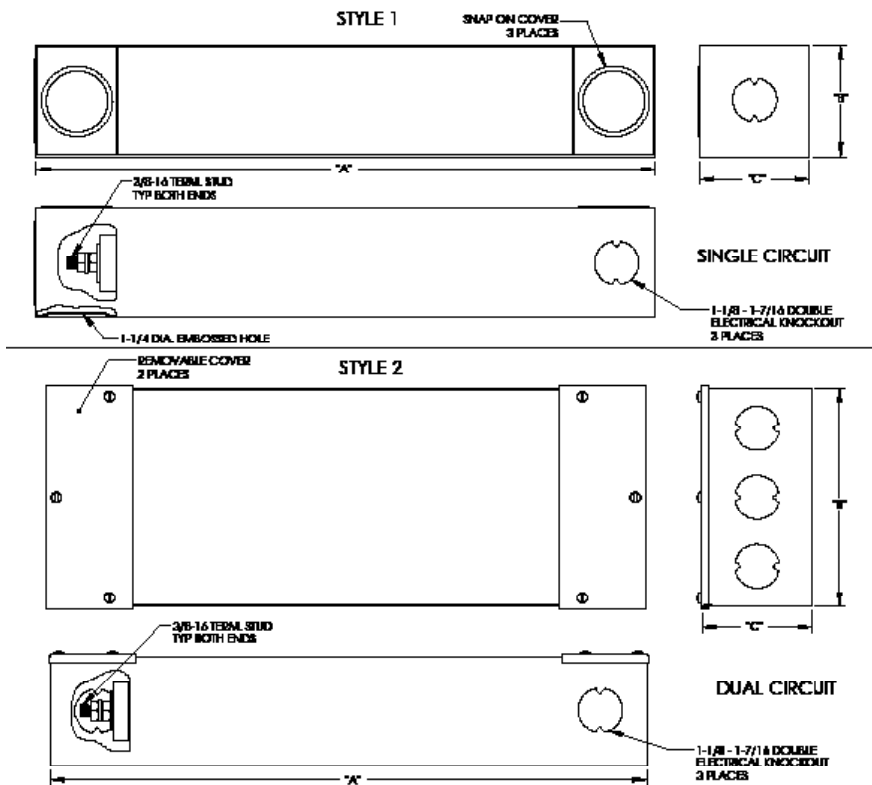
For more information on our filter products call us at: (800) 527-4362 or (714) 289-0055  
LCR, Radius Power, and Filter Concepts are now part of Astrodyne TDI

# LCR F1960

Facility/Shielded Room Power Line Filters, Single and Dual Line, 14 KHz



## LCR F1960 Mechanical Outlines



## LCR F1960 Mechanical Dimensions in mm (in)

Part No.	Current (A)	Voltage (VAC)	A	B	C	Style
F1960	20	277/480	492.25 (19.38)	92.20 (3.63)	90.42 (3.56)	1
F1961	30	277/480	511.30 (20.13)	92.20 (3.63)	90.42 (3.56)	1
F1962	50	277/480	673.10 (26.50)	92.20 (3.63)	90.42 (3.56)	1
F1963	75	277/480	673.10 (26.50)	92.20 (3.63)	90.42 (3.56)	1
F1964	100	277/480	733.55 (28.88)	101.60 (4.00)	101.60 (4.00)	1
F19323	200	277/480	1219.20 (48.00)	203.20 (8.00)	203.20 (8.00)	1
F19324	400	345/600	1219.20 (48.00)	203.20 (8.00)	266.70 (10.50)	1
F1965	2 x 20	277/480	492.25 (19.38)	181.10 (7.13)	90.42 (3.56)	2
F1966	2 x 30	277/480	511.30 (20.13)	181.10 (7.13)	90.42 (3.56)	2
F1967	2 x 50	277/480	673.10 (26.50)	181.10 (7.13)	90.42 (3.56)	2
F1968	2 x 75	277/480	673.10 (26.50)	181.10 (7.13)	90.42 (3.56)	2
F1969	2 x 100	277/480	733.55 (28.88)	203.20 (8.00)	101.60 (4.00)	2

Please contact us for custom specifications.

Specifications are subject to change. Consult factory to verify specifications.

For more information on our filter products call us at: (800) 527-4362 or (714) 289-0055

LCR, Radius Power, and Filter Concepts are now part of Astrodyne TDI