

# LCR F1970

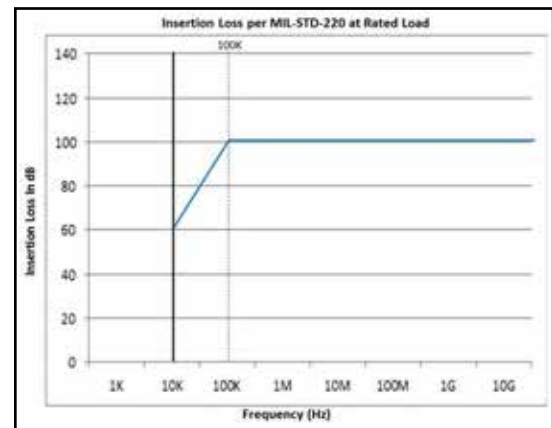
## Facility/Shielded Room Power Line Filters, Multi-line, 100 KHz



Astrodyne TDI EMI filter capabilities can help your products meet all requirements and achieve "mission success" in critical applications. We are a uniquely integrated company for advanced design, engineering, manufacturing, testing and technical support.

### Features

- Attenuation (insertion loss) is 100 dB @ 100 KHz to 10 GHz measured in accordance with MIL-STD-220.
- Filter insertion loss will extend to 40 GHz when installed with proper EMI shielding and isolation.
- Filters can be supplied with various levels of transient voltage protection (EMP, HEMP, and HERF). Filter cabinets supplied with two separate removable covers to access input and output terminals. The output compartment is supplied with an EMI (RF) non-corrosive, environmental gasket to prevent RF leakage and accommodate maximum isolation between input and output compartments. The input compartment is supplied with a moisture resistant gasket.
- Astrodyne TDI power line filters comply with all the applicable requirements of MIL-PRF-15733 latest revision, MIL-STD-810 and UL 1283.
- Bleeder resistors are built into each filter line to discharge the capacitor voltage to ground potential during power shutdown.
- Designed to operate continuously at rated currents and voltages, and are capable of withstanding a 40% current overload for 15 minutes without degradation.
- Voltage drop across each filter line at room temperature and full rated current is less than 1%.
- Electrical specifications - 120/208 or 277/480 VAC, 50/60 Hz.
- Finish: yellow zinc chromate plating (conductive) with gray enamel paint, no paint on rear mounting surface.



Specifications are subject to change. Consult factory to verify specifications.

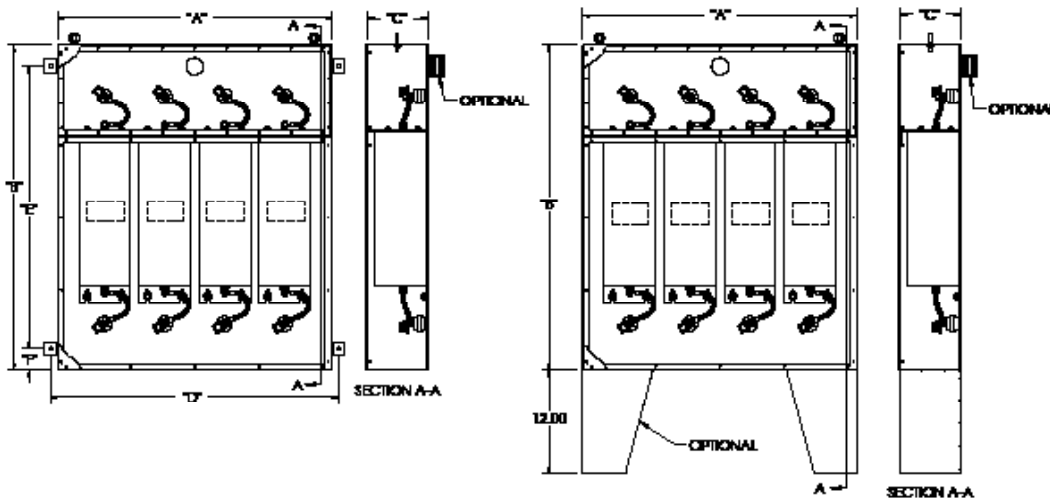
For more information on our filter products call us at: (800) 527-4362 or (714) 289-0055  
LCR, Radius Power, and Filter Concepts are now part of Astrodyne TDI

# LCR F1970

## Facility/Shielded Room Power Line Filters, Multi-line, 100 KHz



### LCR F1970 Mechanical Outlines



### LCR F1970 Mechanical Dimensions in mm (in)

Part No.	Current (A)	A	B	C	D	E	F
F1970-2W	2x20	263.65 (10.38)	673.10 (26.50)	127.00 (5.00)	289.05 (11.38)	546.10 (21.50)	63.50 (2.50)
F1970-3W	3x20	381.00 (15.00)	673.10 (26.50)	127.00 (5.00)	406.40 (16.00)	546.10 (21.50)	63.50 (2.50)
F1970-4W	4x20	492.25 (19.38)	673.10 (26.50)	127.00 (5.00)	524.00 (20.63)	546.10 (21.50)	63.50 (2.50)
F1971-2W	2x30	263.65 (10.38)	711.20 (28.00)	127.00 (5.00)	289.05 (11.38)	584.20 (23.00)	63.50 (2.50)
F1971-3W	3x30	381.00 (15.00)	711.20 (28.00)	127.00 (5.00)	406.40 (16.00)	584.20 (23.00)	63.50 (2.50)
F1971-4W	4x30	492.25 (19.38)	711.20 (28.00)	127.00 (5.00)	524.00 (20.63)	584.20 (23.00)	63.50 (2.50)
F1972-2W	2x50	263.65 (10.38)	835.15 (32.88)	127.00 (5.00)	289.05 (11.38)	708.15 (27.68)	63.50 (2.50)
F1972-3W	3x50	381.00 (15.00)	835.15 (32.88)	127.00 (5.00)	406.40 (16.00)	708.15 (27.68)	63.50 (2.50)
F1972-4W	4x50	492.25 (19.38)	835.15 (32.88)	127.00 (5.00)	524.00 (20.63)	708.15 (27.68)	63.50 (2.50)
F1973-2W	2x75	263.65 (10.38)	835.15 (32.88)	127.00 (5.00)	289.05 (11.38)	708.15 (27.68)	63.50 (2.50)
F1973-3W	3x75	381.00 (15.00)	835.15 (32.88)	127.00 (5.00)	406.40 (16.00)	708.15 (27.68)	63.50 (2.50)
F1973-4W	4x75	492.25 (19.38)	835.15 (32.88)	127.00 (5.00)	536.70 (21.13)	708.15 (27.68)	63.50 (2.50)
F1974-2W	2x100	282.70 (11.13)	895.35 (35.25)	177.80 (7.00)	320.80 (12.63)	768.35 (30.25)	63.50 (2.50)
F1974-3W	3x100	409.70 (16.13)	895.35 (35.25)	177.80 (7.00)	447.80 (17.63)	768.35 (30.25)	63.50 (2.50)
F1974-4W	4x100	536.70 (21.13)	895.35 (35.25)	177.80 (7.00)	574.80 (22.63)	768.35 (30.25)	63.50 (2.50)
F1978-2W	2x150	431.80 (17.00)	835.15 (32.88)	177.80 (7.00)	469.90 (18.50)	708.15 (27.68)	63.50 (2.50)
F1978-3W	3x150	635.00 (25.00)	835.15 (32.88)	177.80 (7.00)	673.10 (26.50)	708.15 (27.68)	63.50 (2.50)
F1978-4W	4x150	838.20 (33.00)	835.15 (32.88)	177.80 (7.00)	876.40 (34.50)	708.15 (27.68)	63.50 (2.50)
F1979-2W	2x200	482.60 (19.00)	895.35 (35.25)	177.80 (7.00)	520.70 (20.50)	768.35 (30.25)	63.50 (2.50)
F1979-3W	3x200	711.20 (28.00)	895.35 (35.25)	177.80 (7.00)	749.30 (29.50)	768.35 (30.25)	63.50 (2.50)
F1979-4W	4x200	812.80 (32.00)	895.35 (35.25)	177.80 (7.00)	850.90 (33.50)	768.35 (30.25)	63.50 (2.50)

\* These part numbers represent our standard product offerings. If you want a variation that you do not see listed, please contact Astrodyne TDI and we will customize our design to fit your needs.

Specifications are subject to change. Consult factory to verify specifications.

For more information on our filter products call us at: (800) 527-4362 or (714) 289-0055

LCR, Radius Power, and Filter Concepts are now part of Astrodyne TDI