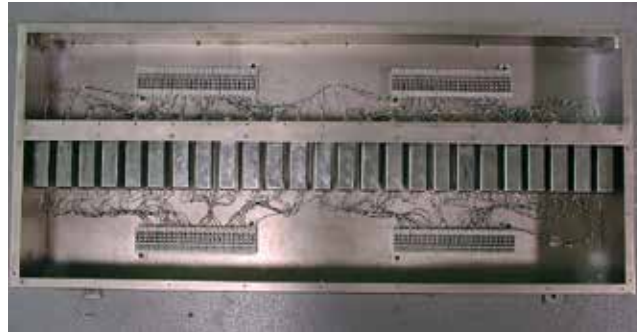


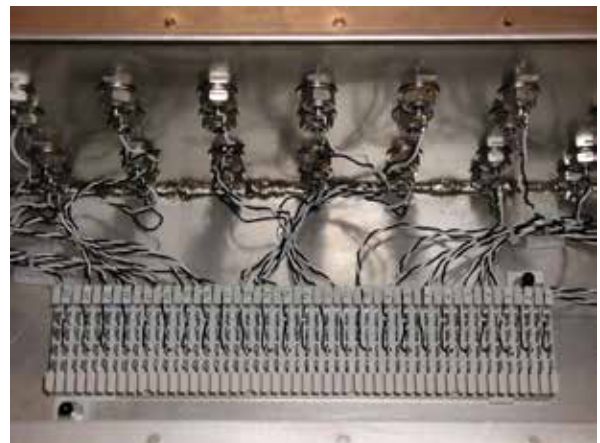
# LCR F15000

## Data, Communications, Alarm and Control Line EMI Enclosures



### Features

- Enclosures are modified NEMA, cold-rolled, welded steel construction.
- Filters are available pre-wired to terminals.
- Output compartment is fully environmentally gasketed for EMI shielding effectiveness to NSA, MIL-STD-285, S.C.I.F. and Tempest
- Finish: yellow zinc chromate plating (conductive) with gray enamel paint, no paint on rear surface.
- Surge suppressors, Type N test penetrations, terminal strip or telephone block are available as options.
- Typical system may consist of any combination of telephone, control, alarm and data line filters installed.
- Communication filter enclosures can also be supplied with various levels of transient voltage protection.



Specifications are subject to change. Consult factory to verify specifications.

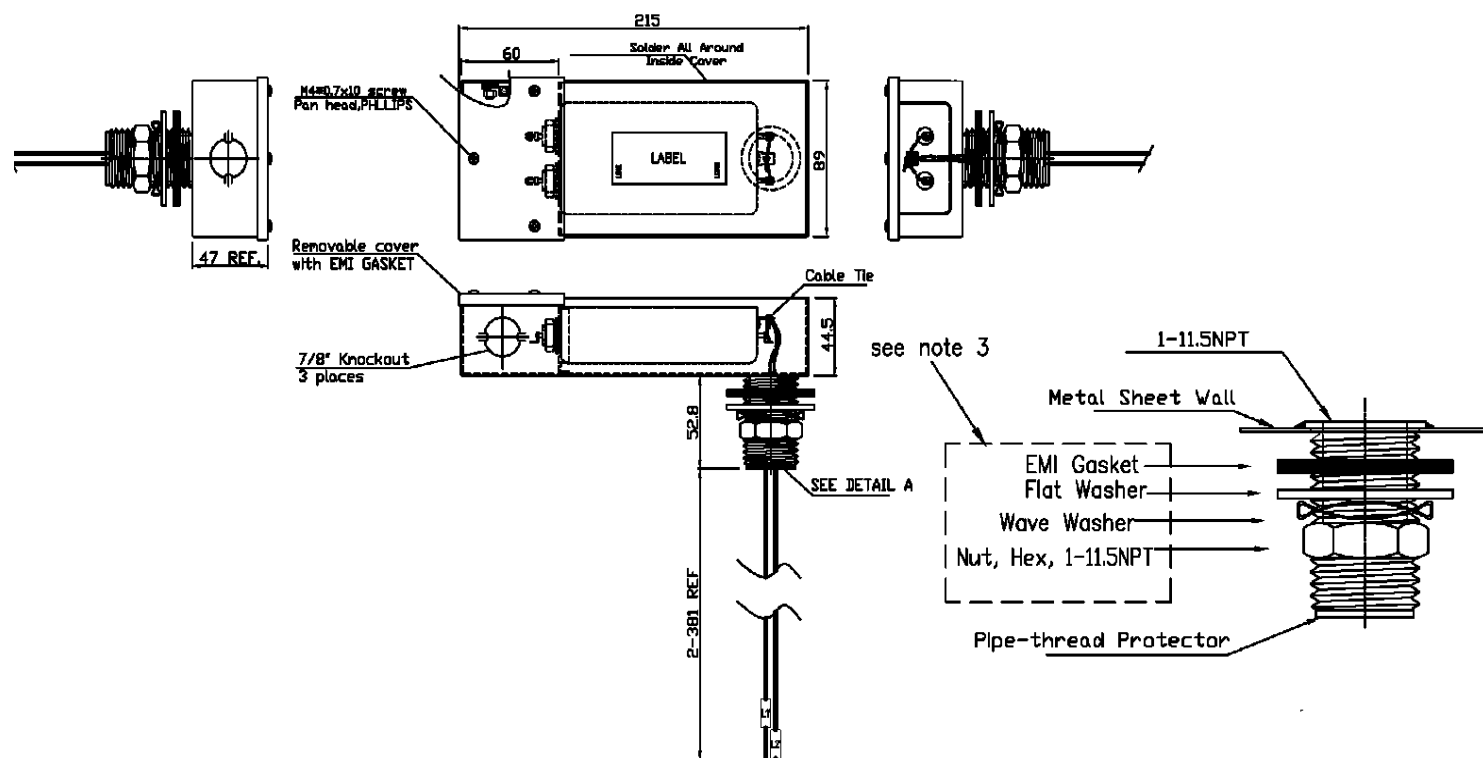
For more information on our filter products call us at: (800) 527-4362 or (714) 289-0055  
LCR, Radius Power, and Filter Concepts are now part of Astrodyne TDI

# LCR F15000

Data, Communications, Alarm and Control Line EMI Enclosures



## LCR F15000 Shielded Room Enclosures



Specifications are subject to change. Consult factory to verify specifications.

For more information on our filter products call us at: (800) 527-4362 or (714) 289-0055

LCR, Radius Power, and Filter Concepts are now part of Astrodyne TDI