

LCR 080M

Medical Power Entry and Outlet Filters



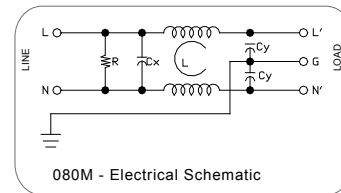
Features

Very low leakage current, compact, easy to use power entry filters with QD tabs or solder terminals.

Typical Applications

Medical equipment and medical typical applications.

Electrical Schematic



Specifications

Rated Voltage Max. (V)	250 VAC Max.
Rated Current (A)	1-20 A @ 40°C
Operating Frequency (Hz)	50/60 Hz
Hipot Rating	
Line to Line	1450 VDC
Line to Ground	2250 VDC
Case	Plated Steel
Packaging Quantity	224 Pcs per Carton

Leakage Current	
@ 250 VAC 50 Hz	10 µA Max.
@ 115 VAC 60 Hz	5 µA Max.
Climatic Category (EN60068-1)	25/85/21
IP Class	IP52

Model No.	Rated Current (A) @ 40°C	Mechanical Diagram	Unit Weight (g)	Terminal Options	
				In	Out
080M.00101.00	1	A	44	IEC Inlet Socket	QD 6.35*0.8
080M.00301.00	3	A	45	IEC Inlet Socket	QD 6.35*0.8
080M.00601.00	6	A	45	IEC Inlet Socket	QD 6.35*0.8
080M.00801.00	8	A	45	IEC Inlet Socket	QD 6.35*0.8
080M.01001.00	10	A	46	IEC Inlet Socket	QD 6.35*0.8
080M.01502.00	15	A	70	IEC Outlet Socket	QD 6.35*0.8
080M.02001.00	20	B	98	IEC Inlet Socket	QD 6.35*0.8
080M.02002.00	20	B	120	IEC Outlet Socket	QD 6.35*0.8

Specifications are subject to change. Consult factory to verify specifications.

For more information on our filter products call us at: (800) 527-4362 or (714) 289-0055

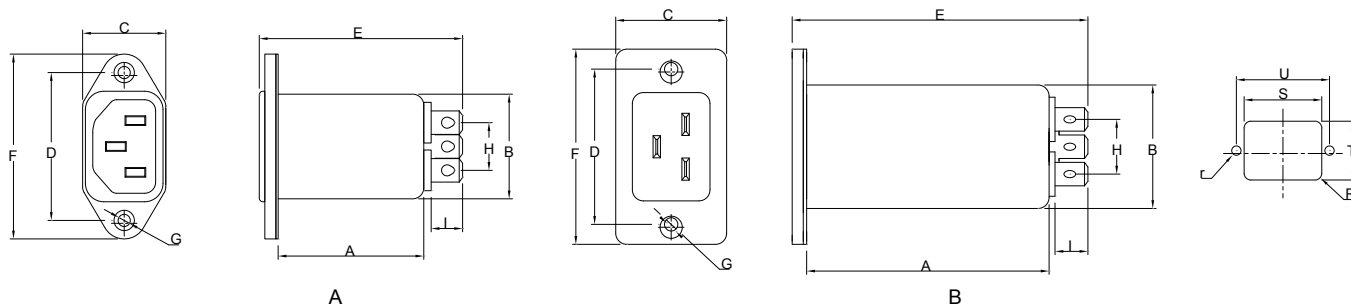
LCR, Radius Power, and Filter Concepts are now part of Astrodyne TDI

LCR 080M

Medical Power Entry and Outlet Filters



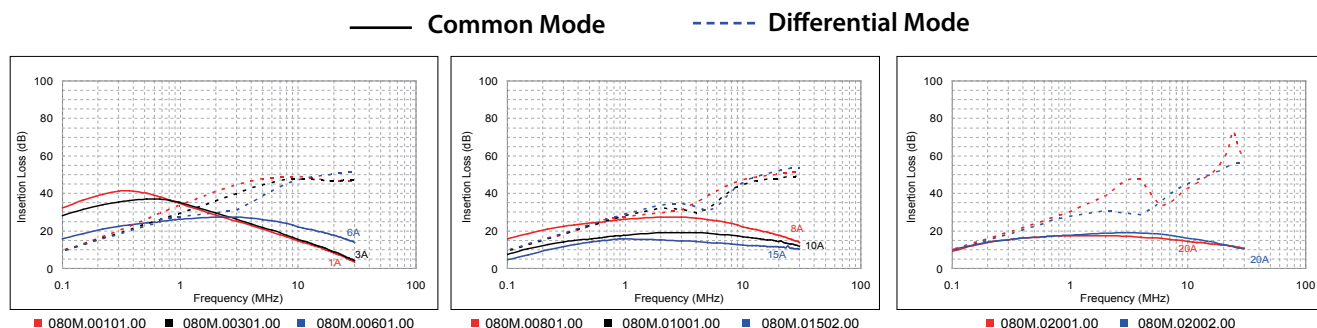
LCR 080M Mechanical Outlines



LCR 080M Mechanical Dimensions (mm)

Model No.	A	B	C	D	E	F	G	H	I	R	S	T	U	r
080M.00101.00	40.0	28.3	22.5	40	55.0	50.0	2*Φ4.0	12.9	8.5	3	29	21.0	40	2.1
080M.00301.00	40.0	28.3	22.5	40	55.0	50.0	2*Φ4.0	12.9	8.5	3	29	21.0	40	2.1
080M.00601.00	40.0	28.3	22.5	40	55.0	50.0	2*Φ4.0	12.9	8.5	3	29	21.0	40	2.1
080M.00801.00	40.0	28.3	22.5	40	55.0	50.0	2*Φ4.0	12.9	8.5	3	29	21.0	40	2.1
080M.01001.00	40.0	28.3	22.5	40	55.0	50.0	2*Φ4.0	12.9	8.5	3	29	21.0	40	2.1
080M.01502.00	53.5	33.6	29.0	40	67.5	50.4	2*Φ4.0	15.0	8.8	3	35	26.5	40	2.1
080M.02001.00	66.5	33.9	30.5	42	80.5	53.0	2*Φ4.0	15.0	8.8	3	35	26.5	42	2.1
080M.02002.00	66.5	39.3	34.8	45	80.5	54.5	2*Φ4.0	15.0	8.8	3	41	32.0	45	2.1

LCR 080M Insertion Loss in dB Measured in a 50 Ω System



Specifications are subject to change. Consult factory to verify specifications.

For more information on our filter products call us at: (800) 527-4362 or (714) 289-0055
 LCR, Radius Power, and Filter Concepts are now part of Astrodyne TDI