

LCR 080M-L

High Performance and High Attenuation Medical Power Entry Filters



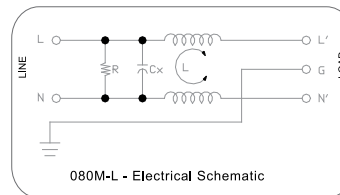
Features

High performance and high attenuation with low leakage current power entry filters. Extended inductance and capacitance designed to provide the optimal EMC results.

Typical Applications

Medical applications and any equipment that requires a low leakage current.

Electrical Schematic



Ordering Part Number System for 080(M) series / 产品编码说明
Terminal Options / 接线端子类型

Code	S	F
Type		
	Solder Lugs	FASTON Terminal

Specifications

Rated Voltage Max. (V)	250 VAC Max.
Rated Current (A)	1-8 A @ 40°C
Over Load (% of Rated Current)	150% for 1 Minute
Operating Frequency (Hz)	50/60 Hz
Hipot Rating	
Line to Line	1450 VDC
Line to Ground	2250 VDC
Case	Plated Steel
Packaging Quantity	54/160 Pcs per Carton 126 Pcs per Carton

Leakage Current

@ 250 VAC 50 Hz 10 µA Max.

@ 115 VAC 60 Hz 5 µA Max.

IP Class IP52

Climatic Category (EN-60068-1) 25/100/21

Operating temperature from -25 to 100°C

Model No.	Rated Current (A) @ 40°C	Mechanical Diagram	Unit Weight (g)	Terminal Options	
				In	Out
080M.00314.00-L	3	A/B	90	IEC Inlet Socket	Solder Tab/QD 6.35*0.8
080M.00414.00-L	4	A/B	90	IEC Inlet Socket	Solder Tab/QD 6.35*0.8
080M.00614.00-L	6	A/B	90	IEC Inlet Socket	Solder Tab/QD 6.35*0.8
080M.00814.00-L	8	A/B	90	IEC Inlet Socket	Solder Tab/QD 6.35*0.8

Specifications are subject to change. Consult factory to verify specifications.

For more information on our filter products call us at: (800) 527-4362 or (714) 289-0055

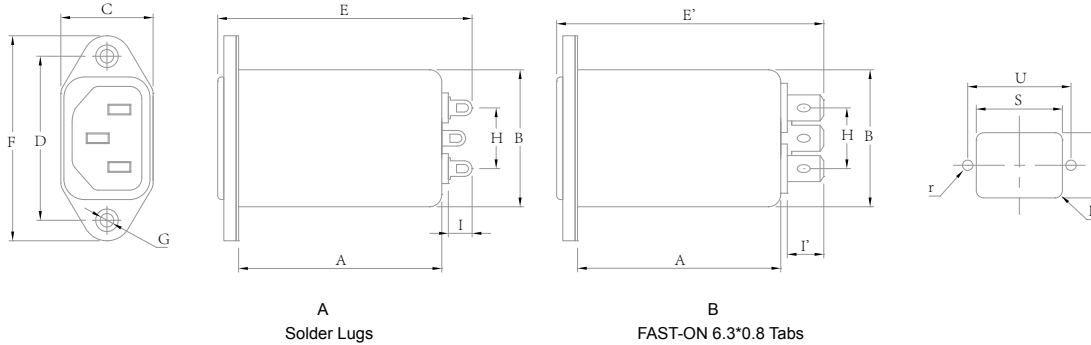
LCR, Radius Power, and Filter Concepts are now part of Astrodyne TDI

LCR 080M-L

High Performance and High Attenuation Medical Power Entry Filters



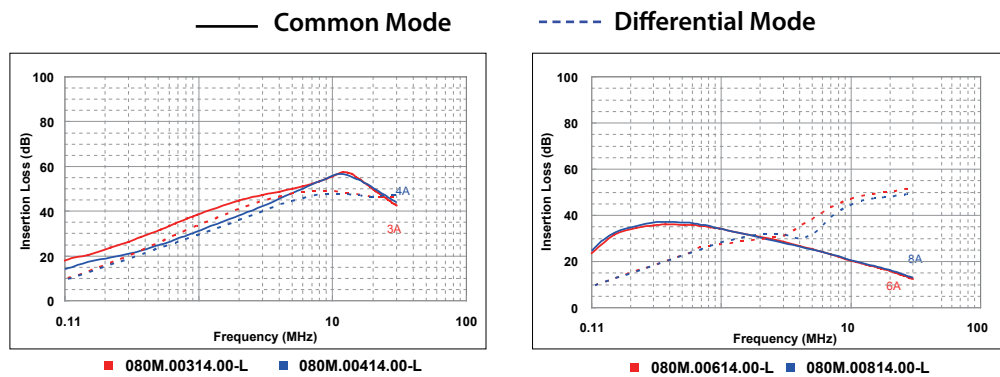
LCR 080M-L Mechanical Outlines



LCR 080M-L Mechanical Dimensions (mm)

Model No.	A	B	C	D	E	E'	F	G	H	I	I'	R	S	T	U	r
080M.00314.00-L	53.3	28.6	22.4	40.0	69.0	71.5	47.6	2* Φ 4.2	12.8	6.0	8.5	3.0	29.6	21.2	40.0	2.1
080M.00414.00-L	53.3	28.6	22.4	40.0	69.0	71.5	47.6	2* Φ 4.2	12.8	6.0	8.5	3.0	29.6	21.2	40.0	2.1
080M.00614.00-L	53.3	28.6	22.4	40.0	69.0	71.5	47.6	2* Φ 4.2	12.8	6.0	8.5	3.0	29.6	21.2	40.0	2.1
080M.00814.00-L	53.3	28.6	22.4	40.0	69.0	71.5	47.6	2* Φ 4.2	12.8	6.0	8.5	3.0	29.6	21.2	40.0	2.1

LCR 080M-L Insertion Loss in dB Measured in a 50 Ω System



Specifications are subject to change. Consult factory to verify specifications.

For more information on our filter products call us at: (800) 527-4362 or (714) 289-0055
 LCR, Radius Power, and Filter Concepts are now part of Astrodyne TDI