

LCR 083

General Purpose Filtered Power Entry Modules with Double Fuse Holder



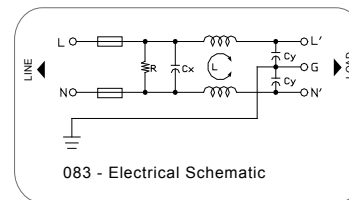
Features

Compact double safety fuse modules, easy to use IEC inlet power entry filters with two safety fuses (on line and neutral). Available with QD tabs or solder terminals.

Typical Applications

Electronic equipment with safety and protection requirements.

Electrical Schematic



Specifications

Rated Voltage Max. (V)	250 VAC Max.
Rated Current (A)	1-10 A @ 40°C
Operating Frequency (Hz)	50/60 Hz
Hipot Rating	
Line to Line	1450 VDC
Line to Ground	2250 VDC
Case	Plated Steel
Packaging Quantity	126 Pcs per Carton

Leakage Current	
@ 250 VAC 50 Hz	0.42 mA Max.
@ 115 VAC 60 Hz	0.23 mA Max.
Climatic Category (EN60068-1)	25/85/21
IP Class	IP51

Model No.	Rated Current (A) @ 40°C	Unit Weight (g)	Terminal Options	
			In	Out
083.00101.00	1	62	IEC Inlet Socket	QD 6.35*0.8
083.00301.00	3	64	IEC Inlet Socket	QD 6.35*0.8
083.00601.00	6	64	IEC Inlet Socket	QD 6.35*0.8
083.01001.00	10	66	IEC Inlet Socket	QD 6.35*0.8

Specifications are subject to change. Consult factory to verify specifications.

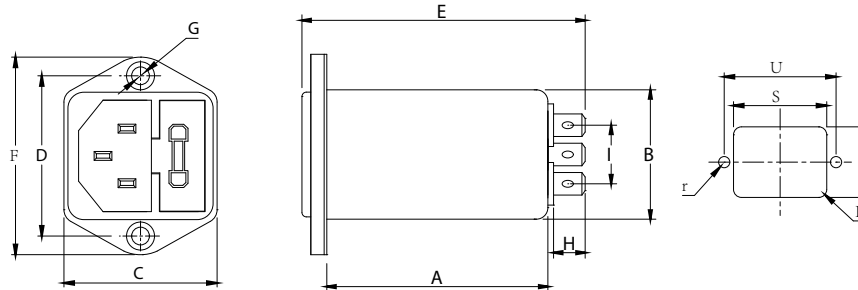
For more information on our filter products call us at: (800) 527-4362 or (714) 289-0055
LCR, Radius Power, and Filter Concepts are now part of Astrodyne TDI

LCR 083

General Purpose Filtered Power Entry Modules with Double Fuse Holder



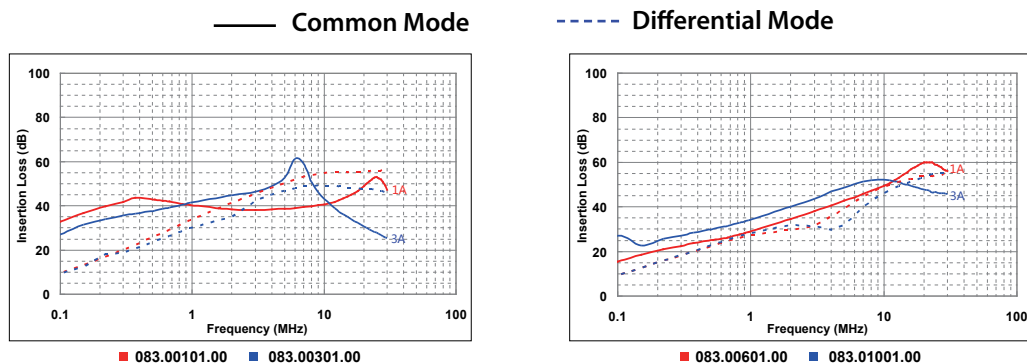
LCR 083 Mechanical Outlines



LCR 083 Mechanical Dimensions (mm)

Model No.	A	B	C	D	E	F	G	H	I	R	S	T	U	r
083.00101.00	50.9	28.5	34	36.1	66	44.5	2* Φ 4.0	8.8	12	3	29.5	33.5	36.1	2.1
083.00301.00	50.9	28.5	34	36.1	66	44.5	2* Φ 4.0	8.8	12	3	29.5	33.5	36.1	2.1
083.00601.00	50.9	28.5	34	36.1	66	44.5	2* Φ 4.0	8.8	12	3	29.5	33.5	36.1	2.1
083.01001.00	50.9	28.5	34	36.1	66	44.5	2* Φ 4.0	8.8	12	3	29.5	33.5	36.1	2.1

LCR 083 Insertion Loss in dB Measured in a 50 Ω System



Specifications are subject to change. Consult factory to verify specifications.

For more information on our filter products call us at: (800) 527-4362 or (714) 289-0055
 LCR, Radius Power, and Filter Concepts are now part of Astrodyne TDI