

LCR 083/083M

Medical Filtered Power Entry Modules with Double Fuse Holder



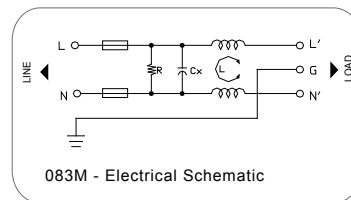
Features

Compact, easy to use low leakage current power entry modules with two safety fuses on both line and neutral. Available with QD tabs or solder terminals.

Typical Applications

Medical or low leakage current compact design electronic equipment with safety and protection requirements.

Electrical Schematic



Specifications

Rated Voltage Max. (V)	250 VAC Max.
Rated Current (A)	1-10 A @ 40°C
Operating Frequency (Hz)	50/60 Hz
Hipot Rating	
Line to Line	1450 VDC
Line to Ground	2250 VDC
Case	Plated Steel
Packaging Quantity	126 Pcs per Carton

Leakage Current	
@ 250 VAC 50 Hz	10 µA Max.
@ 115 VAC 60 Hz	5 µA Max.
Climatic Category (EN60068-1)	24/85/21
IP Class	IP51

Model No.	Rated Current (A) @ 40°C	Unit Weight (g)	Terminal Options	
			In	Out
083M.00101.00	1	62	IEC Inlet Socket	QD 6.35*0.8
083M.00301.00	3	64	IEC Inlet Socket	QD 6.35*0.8
083M.00601.00	6	64	IEC Inlet Socket	QD 6.35*0.8
083M.01001.00	10	66	IEC Inlet Socket	QD 6.35*0.8

Specifications are subject to change. Consult factory to verify specifications.

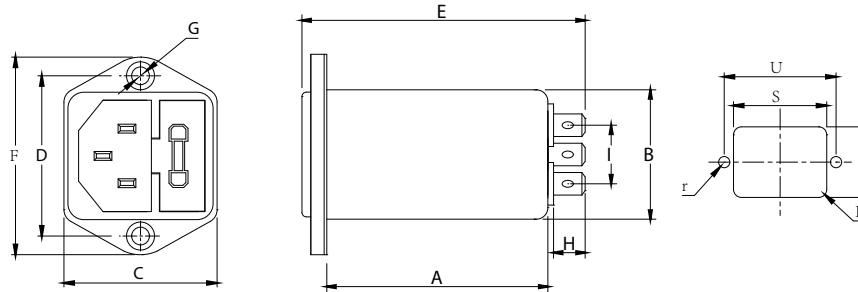
For more information on our filter products call us at: (800) 527-4362 or (714) 289-0055
LCR, Radius Power, and Filter Concepts are now part of Astrodyne TDI

LCR 083/083M

Medical Filtered Power Entry Modules with Double Fuse Holder



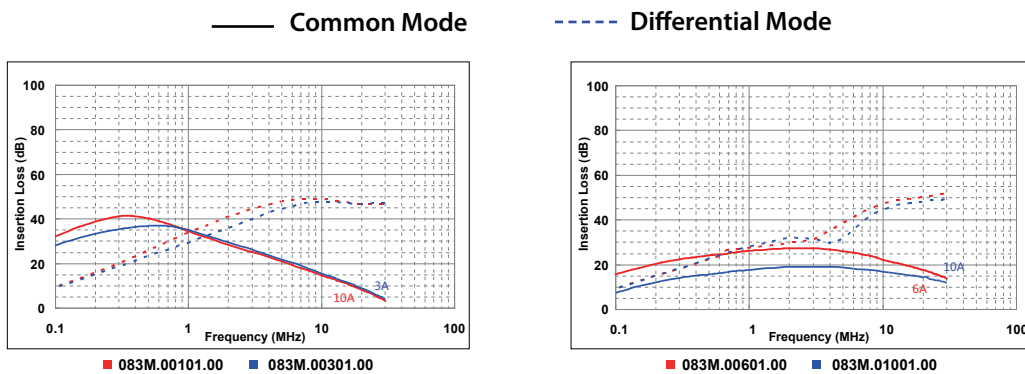
LCR 083/083M Mechanical Outlines



LCR 083/083M Mechanical Dimensions (mm)

Model No.	A	B	C	D	E	F	G	H	I	R	S	T	U	r
083M.00101.00	50.9	28.5	34	36.1	66	44.5	2* Φ 4.0	8.8	12	3	29.5	33.5	36.1	2.1
083M.00301.00	50.9	28.5	34	36.1	66	44.5	2* Φ 4.0	8.8	12	3	29.5	33.5	36.1	2.1
083M.00601.00	50.9	28.5	34	36.1	66	44.5	2* Φ 4.0	8.8	12	3	29.5	33.5	36.1	2.1
083M.01001.00	50.9	28.5	34	36.1	66	44.5	2* Φ 4.0	8.8	12	3	29.5	33.5	36.1	2.1

LCR 083/083M Insertion Loss in dB Measured in a 50 Ω System



Specifications are subject to change. Consult factory to verify specifications.

For more information on our filter products call us at: (800) 527-4362 or (714) 289-0055
 LCR, Radius Power, and Filter Concepts are now part of Astrodyne TDI