

LCR 085M

Medical Filtered Power Entry Modules with Switch



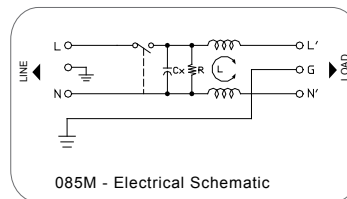
Features

Low Leakage current, compact integrated power entry module with on/off switch. QD tabs and other terminal options available.

Typical Applications

Medical and compact electronic equipment and applications requiring a low leakage current.

Electrical Schematic



Specifications

Rated Voltage Max. (V)	250 VAC Max.
Rated Current (A)	1-10 A @ 40°C
Operating Frequency (Hz)	50/60 Hz
Hipot Rating	
Line to Line	1450 VDC
Line to Ground	2250 VDC
Case	Plated Steel
Packaging Quantity	126 Pcs per Carton

Leakage Current	
@ 250 VAC 50 Hz	10 µA Max.
@ 115 VAC 60 Hz	5 µA Max.
IP Class	IP51
Climatic Category (EN60068-1)	25/85/21

Model No.	Rated Current (A) @ 40°C	Unit Weight (g)	Terminal Options	
			In	Out
085M.00101.00	1	63	IEC Inlet Socket	QD 6.35*0.8
085M.00301.00	3	63	IEC Inlet Socket	QD 6.35*0.8
085M.00601.00	6	65	IEC Inlet Socket	QD 6.35*0.8
085M.01001.00	10	65	IEC Inlet Socket	QD 6.35*0.8

Specifications are subject to change. Consult factory to verify specifications.

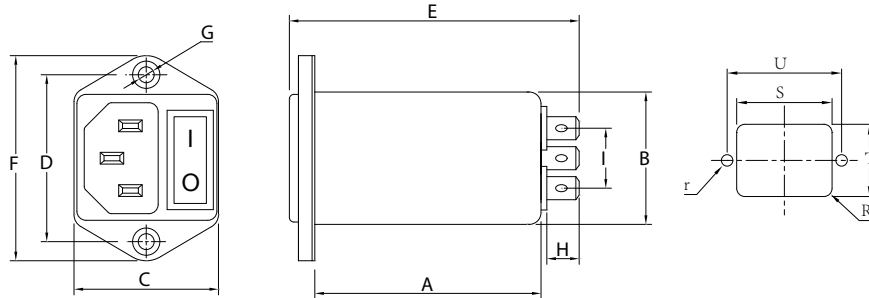
For more information on our filter products call us at: (800) 527-4362 or (714) 289-0055
 LCR, Radius Power, and Filter Concepts are now part of Astrodyne TDI

LCR 085M

Medical Filtered Power Entry Modules with Switch



LCR 085M Mechanical Outlines



LCR 085M Mechanical Dimensions (mm)

Model No.	A	B	C	D	E	F	G	H	I	R	S	T	U	r
085M.00101.00	50.9	28.5	33	36	67	44	2*4.0	8.8	12	3	29.5	33.5	36.1	2.1
085M.00301.00	50.9	28.5	33	36	67	44	2*4.0	8.8	12	3	29.5	33.5	36.1	2.1
085M.00601.00	50.9	28.5	33	36	67	44	2*4.0	8.8	12	3	29.5	33.5	36.1	2.1
085M.01001.00	50.9	28.5	33	36	67	44	2*4.0	8.8	12	3	29.5	33.5	36.1	2.1

LCR 085M Insertion Loss in dB Measured in a 50 Ω System

