

LCR 095/03/04

High Performance Washing Machine Filters



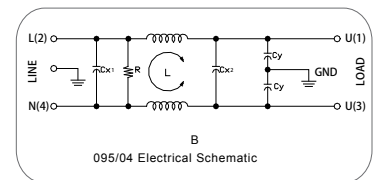
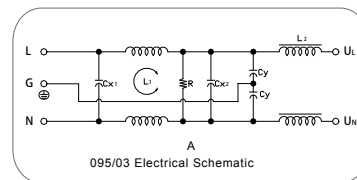
Features

Outstanding differential mode suppression.

Typical Applications

Top load and front load washing machines.

Electrical Schematic



Specifications

Rated Voltage Max. (V)	250 VAC
Rated Current (A)	10-16 A @ 40°C
Operating Frequency (Hz)	50/60 Hz
Hipot Rating	
Line to Line	1450 VDC
Line to Ground	2250 VDC
Case	Plastic Resin
Packaging Quantity	50 Pcs per Carton

Leakage Current	
@ 250 VAC 50 Hz	0.89 mA Max.
@ 115 VAC 60 Hz	0.49 mA Max.
IP Class	IP53
Climatic Category (EN60068-1)	25/85/21
Flammability	UL 94 V-0

Model No.	Rated Current (A) @ 40°C	CM L (mH)	DM L (mH)	Cx1 (uF)	Cx2 (uF)	Cx2 (nF)	R (Ω)	Schematic	Unit Weight (g)	Terminal Options	
										In	Out
095.31001.00	10	3.0	18	0.47	1.0	4.7	0.68 M	A	200	QD 6.35*0.8	QD 6.35*0.8
095.31201.00	12	3.0	18	0.47	1.0	4.7	0.68 M	A	200	QD 6.35*0.9	QD 6.35*0.9
095.31601.00	16	3.0	18	0.47	1.0	4.7	0.68 M	A	200	QD 6.35*0.10	QD 6.35*0.10
095.31602.00	16	3.0	18	0.68	1.0	4.7	0.68 M	A	200	QD 6.35*0.11	QD 6.35*0.11
095.41001.00	10	12.0		0.47	0.68	4.7	0.68 M	B	200	QD 6.35*0.12	QD 6.35*0.12
095.41201.00	12	8.0		0.47	0.68	4.7	0.68 M	B	200	QD 6.35*0.13	QD 6.35*0.13
095.41601.00	16	5.0		0.47	0.68	4.7	0.68 M	B	200	QD 6.35*0.14	QD 6.35*0.14
095.41602.00	16	12.5		0.47	0.68	4.7	0.68 M	B	200	QD 6.35*0.15	QD 6.35*0.15

Specifications are subject to change. Consult factory to verify specifications.

For more information on our filter products call us at: (800) 527-4362 or (714) 289-0055

LCR, Radius Power, and Filter Concepts are now part of Astrodyne TDI

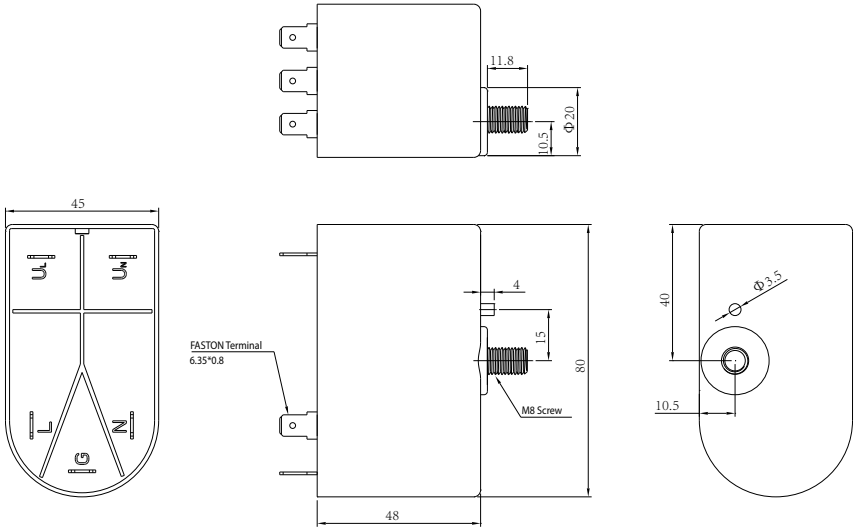
LCR 095/03/04

High Performance Washing Machine Filters



LCR 095/03 Mechanical Outlines

For reference purpose only
1 inch=25.4 mm (All dimensions in mm)



LCR 095/03 Insertion Loss in dB Measured in a 50 Ω System

— Common Mode - - - - Differential Mode

