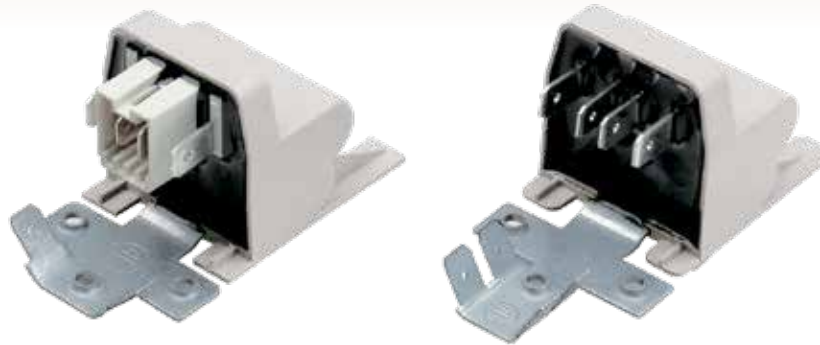


LCR 095/05

High Ambient Dishwasher and Light White Goods Filters



Features

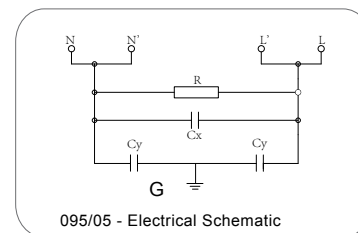
VDE approved per EN60939-2, design to operate in 85°C ambient, small and compact EMI filters/suppression capacitors filters.

Unique capacitor combinations provide higher safety/surge performances and better EMI performances in a very economical solution with standard RAST 5 connection or 4 fast on tabs.

Typical Applications

White goods in general (especially washing machines, dryers and dishwashers) will benefit from this economic design and the high performance of this unique filter.

Electrical Schematic



Specifications

Rated Voltage Max. (V)	120/250 VAC
Rated Current (A)	16 A @ 85°C
Frequency (Hz)	50/60 Hz
Hipot Rating	
Line to Line	1450 VDC
Line to Ground	2250 VDC
Surge per EN61000-4-5	3 KV/5 KV (6 KV)
Case	Modified Plastic
Climatic Category (EN60068-1)	25/100/21

Leakage Current	
@ 250 VAC 50 Hz	2.50 mA Max.
@ 120 VAC 60 Hz	1.50 mA Max.
IP Class	IP68
Flammability	UL 94 V-0
GWFI (EN 60695-2-12)	> 850°C
GWIT (EN 60695-2-13)	> 750°C
CTI (EN 60112)	> 250 V
BPT (EN 60695-10-2)	> 125°C

Specifications are subject to change. Consult factory to verify specifications.

For more information on our filter products call us at: (800) 527-4362 or (714) 289-0055
LCR, Radius Power, and Filter Concepts are now part of Astrodyne TDI

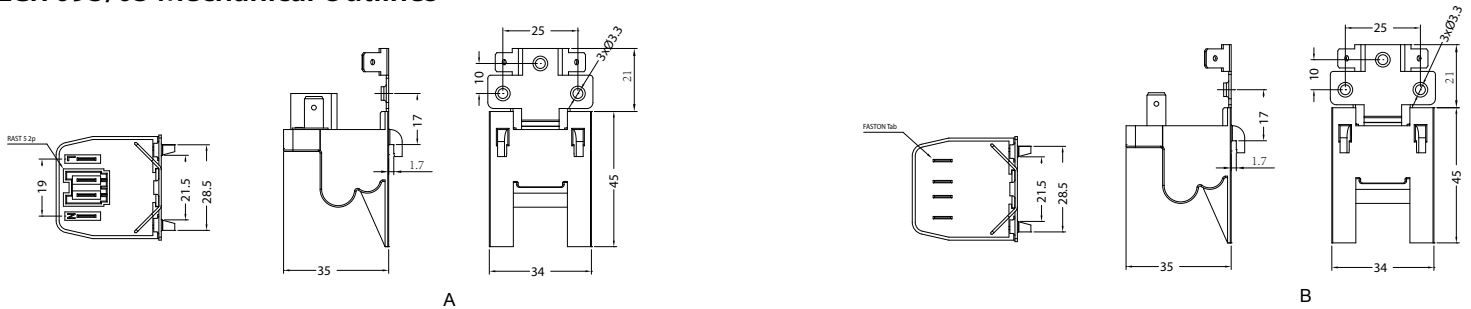
LCR 095/05

High Ambient Dishwasher and Light White Goods Filters



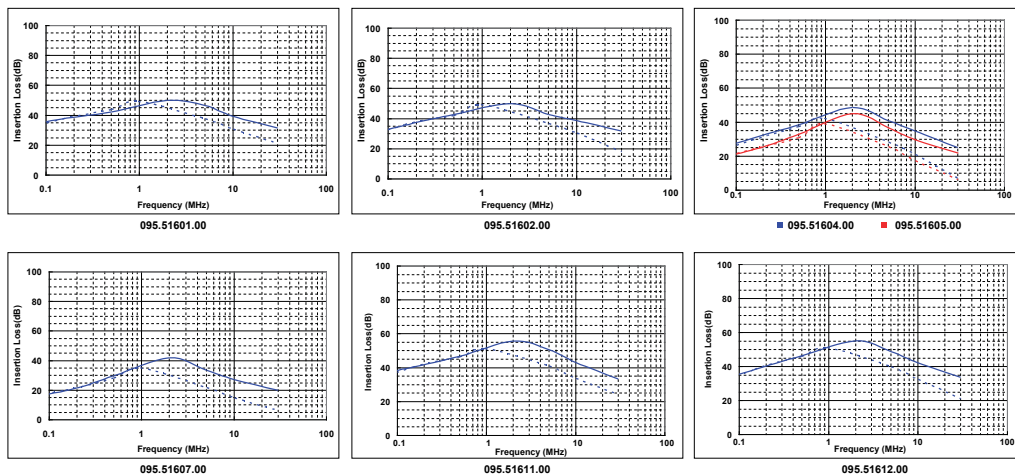
Model No.	Cx (uF)	Cy (nF)	Model No.	Cx (uF)	Cy (nF)	Model No.	Cx (uF)	Cy (nF)	Model No.	Cx (uF)	Cy (nF)
095.51611.00	0.25	27.0	095.51613.00		15.0	095.51623.00	0.10	2.2	095.51640.00	0.25	15.0
095.51601.00	0.25	25.0	095.51614.00	0.15	10.0	095.51624.00	0.47	27.0	095.51641.00	0.25	10.0
095.51612.00	0.25	22.0	095.51615.00	0.15	4.7	095.51625.00	0.47	25.0	095.51644.00	0.25	2.2
095.51602.00	0.25	15.0	095.51616.00	0.15	2.2	095.51626.00	0.47	22.0	095.51645.00	0.25	1.0
095.51604.00	0.25	10.0	095.51617.00	0.10	27.0	095.51627.00	0.47	15.0	095.51646.00	0.47	27.0
095.51605.00	0.25	4.7	095.51618.00	0.10	25.0	095.51628.00	0.47	10.0	095.51647.00	0.47	25.0
095.51607.00	0.25	2.2	095.51619.00	0.10	22.0	095.51631.00	0.33	27.0	095.51648.00	0.47	22.0
095.51608.00	0.25	27.0	095.51620.00	0.10	15.0	095.51632.00	0.33	25.0	095.51649.00	0.47	15.0
095.51609.00	0.25	25.0	095.51621.00	0.10	10.0	095.51638.00	0.25	27.0	095.51650.00	0.47	10.0
095.51610.00	0.25	22.0	095.51622.00	0.10	4.7	095.51639.00	0.25	25.0	095.51653.00	0.33	27.0
						095.51640.00	0.25	22.0	095.51654.00	0.33	25.0

LCR 095/05 Mechanical Outlines



LCR 095/05 Insertion Loss in dB Measured in a 50 Ω System

— Common Mode - - - - Differential Mode



Specifications are subject to change. Consult factory to verify specifications.

For more information on our filter products call us at: (800) 527-4362 or (714) 289-0055

LCR, Radius Power, and Filter Concepts are now part of Astrodyne TDI