

# LCR F9100

## Extended Temperature Rugged COTS Single Stage Single Phase Filters



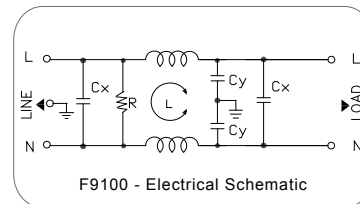
### Features

Extended temperature range for 80°C ambient single phase power line filters for dynamic and high ambient environments.

### Typical Applications

Applications at high ambient environments or with limited temperature rise requirements such as RTCA/DO-160, MIL-STD-461 and other military/rugged industrial applications.

### Electrical Schematic



Rated Voltage Max. (V)	250 VAC Max.
Rated Current (A)	5-35 A @ 80°C
Operating Frequency (Hz)	50/60 Hz
Hipot Rating	
Line to Line	1450 VDC
Line to Ground	2250 VDC
Case	Plated Steel
Packaging Quantity	60/12 Pcs per Carton

Leakage Current	
@ 250 VAC 50 Hz	0.89 mA Max.
@ 115 VAC 60 Hz	0.49 mA Max.
Climatic Category	25/100/21
Operating Temp	-40 to 100°C
IP Class	IP65

Model No.	Rated Current (A) @ 80°C	L/N Termination/ Terminals L/N	Ground Termination/ Terminals	Mechanical Diagram
F9100.00511.00	5	M4/8-32	M4/8-32	A
F9100.01011.00	10	M4/8-32	M4/8-32	A
F9100.02011.00	20	M4/8-32	M4/8-32	B
F9100.03011.00	30	M6/1/4-20	M6/1/4-20	B
F9100.03511.00	35	M6/1/4-20	M6/1/4-20	B

Specifications are subject to change. Consult factory to verify specifications.

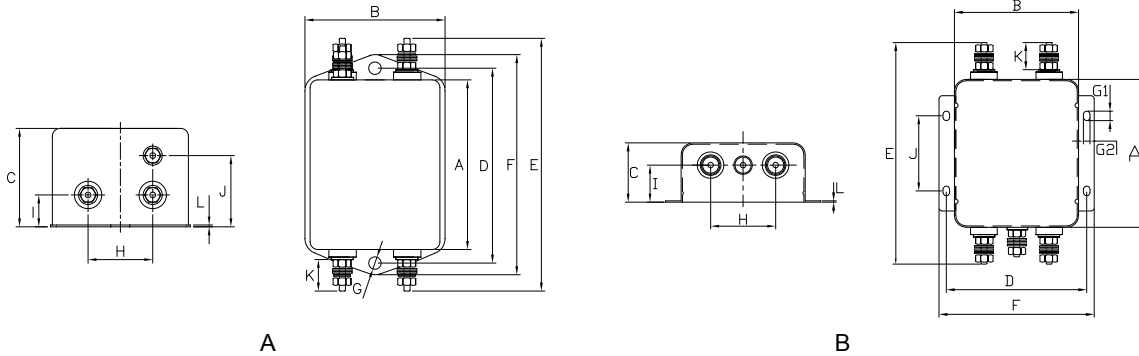
For more information on our filter products call us at: (800) 527-4362 or (714) 289-0055  
LCR, Radius Power, and Filter Concepts are now part of Astrodyne TDI

# LCR F9100

## Extended Temperature Rugged COTS Single Stage Single Phase Filters



### LCR F9100 Mechanical Outlines

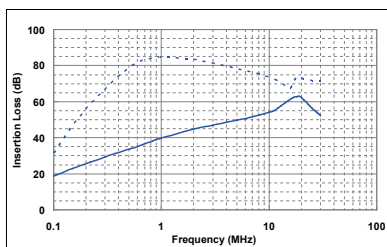


### LCR F9100 Mechanical Dimensions (mm)

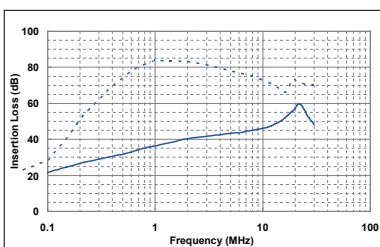
Model No.	A	B	C	D	E	F	G	H	I	J	K
F9100.00511.00	62.5	52.0	38.0	75.0	87.5	85.0	4.8	25.0	12.3	27.5	8.5
F9100.01011.00	62.5	52.0	38.0	75.0	87.5	85.0	4.8	25.0	12.3	27.5	8.5
F9100.02011.00	100.0	84.0	40.0	95.0	150.6	105.0	4- $\Phi$ 4.5*6.5	44.0	25.0	50.8	20.5
F9100.03011.00	100.0	84.0	40.0	95.0	150.6	105.0	4- $\Phi$ 4.5*6.5	44.0	25.0	50.8	20.5
F9100.03511.00	100.0	84.0	40.0	95.0	150.6	105.0	4- $\Phi$ 4.5*6.5	44.0	25.0	50.8	20.5

### LCR F9100 Insertion Loss in dB Measured in a 50 $\Omega$ System

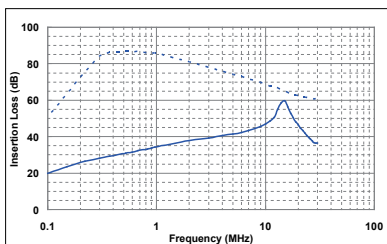
— Common Mode  
 - - - Differential Mode



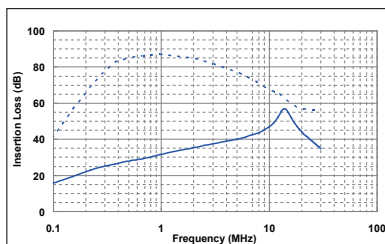
F9100.00511.00



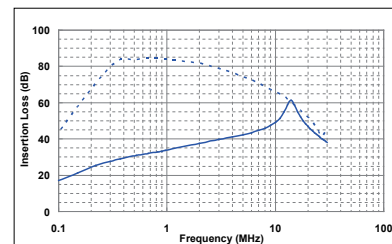
F9100.01011.00



F9100.02011.00



F9100.03011.00



F9100.03511.00

Specifications are subject to change. Consult factory to verify specifications.

For more information on our filter products call us at: (800) 527-4362 or (714) 289-0055  
 LCR, Radius Power, and Filter Concepts are now part of Astrodyne TDI