

LCR F9200

Extended Temperature Rugged COTS Dual Stage Single Phase Filters



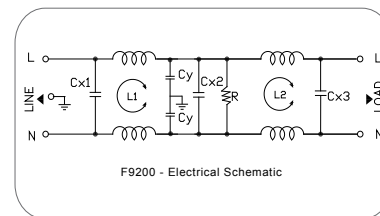
Features

Extended temperature range for 80°C ambient, high performance, dual stage power line filters for dynamic and high ambient environments.

Typical Applications

Applications at high ambient environments or with limited temperature rise requirements such as RTCA/DO-160, MIL-STD-461 and other military/rugged industrial applications.

Electrical Schematic



Rated Voltage Max. (V)	250 VAC Max.
Rated Current (A)	5-35 A @ 80°C
Operating Frequency (Hz)	50/60 Hz
Hipot Rating	
Line to Line	1450 VDC
Line to Ground	2250 VDC
Case	Plated Steel
Packaging Quantity	Custom Design

Leakage Current	
@ 250 VAC 50 Hz	0.89 mA Max.
@ 115 VAC 60 Hz	0.49 mA Max.
Operating Temp	-40 to 100°C
IP Class	IP65
Climatic Category (EN-60068-1)	25/100/21

Model No.	Rated Current (A) @ 80°C	L / N Termination/ Terminals L/N	Ground Termination/ Terminals	L (mH)	Core	Mechanical Diagram
F9200.00511.00	5	M4/8-32	M4/8-32	6.1	T25x15x10C	A
F9200.01011.00	10	M4/8-32	M4/8-32	7.2	T36x23x15C	A
F9200.02011.00	20	M4/8-32	M4/8-32	0.9	T38x19x13C	B
F9200.03011.00	30	M6/1/4-20	M6/1/4-20	0.6	T38x19x13C	B
F9200.03511.00	35	M6/1/4-20	M6/1/4-20	0.6	T38x19x13C	B

Specifications are subject to change. Consult factory to verify specifications.

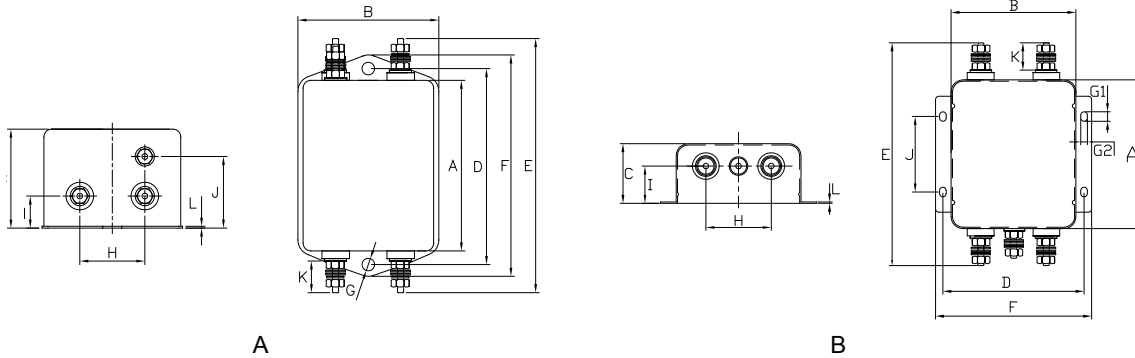
For more information on our filter products call us at: (800) 527-4362 or (714) 289-0055
LCR, Radius Power, and Filter Concepts are now part of Astrodyne TDI

LCR F9200

Extended Temperature Rugged COTS Dual Stage Single Phase Filters



LCR F9200 Mechanical Outlines

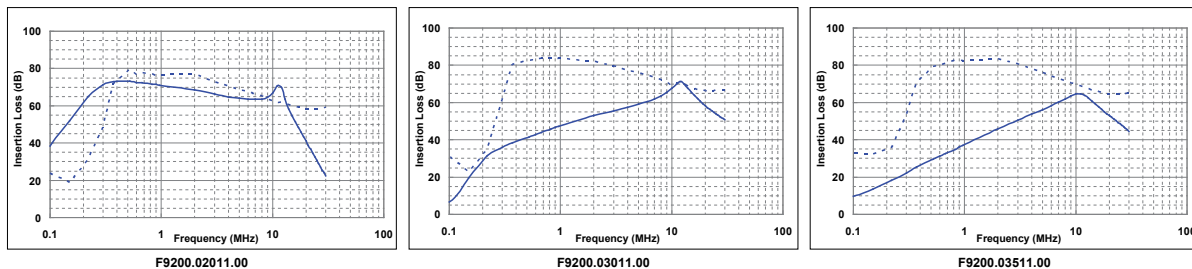
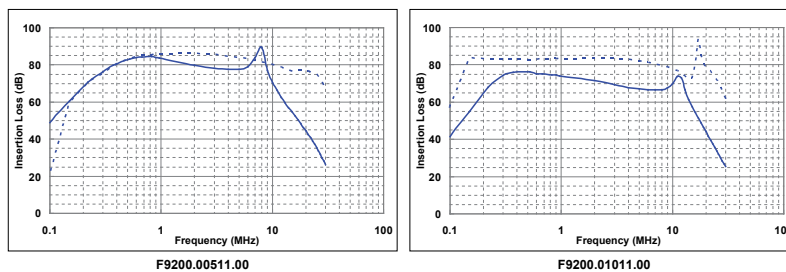


LCR F9200 Mechanical Dimensions (mm)

Model No.	A	B	C	D	E	F	G	H	I	J	K
F9200.00511.00	62.5	52.0	38.0	75.0	87.5	85.0	4.8	25.0	12.3	27.5	8.5
F9200.01011.00	92.5	58.0	41.0	105.0	117.5	115.0	5.0*6.8	30.0	13.0	29.0	8.5
F9200.02011.00	100.0	84.0	57.0	95.0	150.6	105.0	4.5*6.5	44.0	37.0	50.8	20.5
F9200.03011.00	100.0	84.0	57.0	95.0	150.6	105.0	4.5*6.5	44.0	37.0	50.8	20.5
F9200.03511.00	100.0	84.0	57.0	95.0	150.6	105.0	4.5*6.5	44.0	37.0	50.8	20.5

LCR F9200 Insertion Loss in dB Measured in a 50 Ω System

— Common Mode
 - - - Differential Mode



Specifications are subject to change. Consult factory to verify specifications.

For more information on our filter products call us at: (800) 527-4362 or (714) 289-0055
 LCR, Radius Power, and Filter Concepts are now part of Astrodyne TDI