

RP605 Series

High Current DC Power Line Filters



100 A to 200A Chassis Mount Filter

Specifications

Max. Operating Voltage	250 VDC
Ambient Temperature	-25 to 40°C
Climatic Category	25/100/21
Hipot Rating (L-G)	2700 VDC
Terminals (-T)	S: 100 A (M6) 150-200 A (M10)
Safety Approvals	CSA, UR, EN60939
Typ. Weight, lbs (kg)	6.0 (2.7)

Part Number/Ordering

RP605	-X (Amps)	-Y (Ycap, nF)	-T
	100	10	S
	150	100	
	180		
	200		

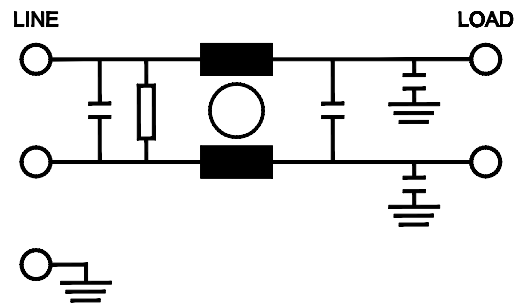
Note: Use any combination of -Y with any -X (Amps) rating
e.g. RP605-100-10-S (100 Amps with 10 nF Ycap)

Typical Insertion Loss, dB (50/50 Ohm)

Freq (MHz)	0.15	0.5	1.0	10	30
CM(dB)	16	28	36	45	50
DM(dB)	32	60	60	50	50

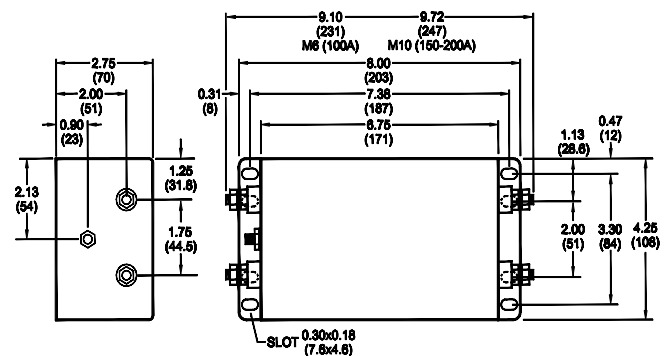


Electrical Schematic



Mechanical Dimensions

TYPICAL TOLERANCE: +/-0.02" (0.50 mm)



Specifications are subject to change. Consult factory to verify specifications.

For more information on our filter products call us at: (800) 527-4362 or (714) 289-0055
LCR, Radius Power, and Filter Concepts are now part of Astrodyne TDI