

RPM7020 Series

MIL/COTS Compact AC, 1PH EMI Power Line Filter

**RPM7020
MILITARY/ COTS TO 20A
50/60/400Hz
MIL-STD-461/ DO-160**



SPECIFICATIONS

Operating Freq.	: 50/60/400Hz
Max. Operating Voltage	: 300VAC
Ambient Temperature	: -40 to 70C
Hipot Rating (L-G)	: 1800VDC
Terminals (-T)	: S: M5 Studs
Typical Leakage Current	: 3.5mA/Line (250V/60Hz)
Applications	: Mil-461/ DO-160
Typ. Weight, LBS (KG)	: 0.5 (0.2)
Note:	
* Call for other termination types (e.g. Circular Mil-Connectors, etc.)	
*Leakage Current is determined by the line to ground capacitors in the filter. The capacitors can be easily varied to match the system leakage requirements.	

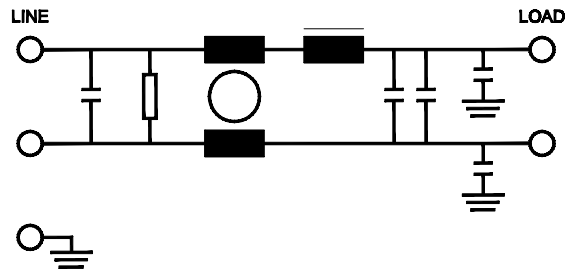
**TYPICAL INSERTION LOSS, dB
(50/50ohm)**

FREQ (MHz)	.01	.15	.5	1	10	30
CM(dB)	14	30	50	50	45	30
DM(dB)	22	40	60	60	40	30

PART NUMBER/ ORDERING

RPM7020	-X (Amps)	-T
	5	S
	10	
	15	
	20	

SCHEMATIC

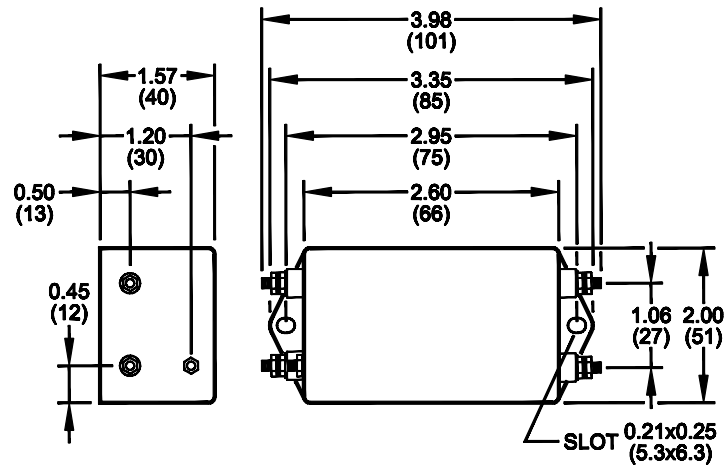


Reference purposes only.
Specifications are subject to change.
Consult factory to verify specifications.

RPM7020

Mechanical Dimensions

5/10/15/20Amp



TYPICAL TOLERANCE: +/-0.02 (0.50)

Reference purposes only.
 Specifications are subject to change.
 Consult factory to verify specifications.