

RPM7050 Series

MIL/COTS AC, 1PH, 1U Height EMI Power Line Filter

**RPM7050
MILITARY/ COTS TO 30A
MIL-STD-461/ DO-160
1U HEIGHT**



SPECIFICATIONS

Operating Freq.	:	50/60/400Hz
Max. Operating Voltage	:	300VAC
Ambient Temperature	:	-40 to 70C
Hipot Rating (L-G)	:	1800VDC
Terminals (-T)	:	S: M5 Studs
Typical Leakage Current	:	3.5mA/Line (250V/60Hz)
Applications	:	Mil-461/ DO-160
Typ. Weight, LBS (KG)	:	1.5 (0.7)
Note:		
* Call for other termination types (e.g. Circular Mil-Connectors, etc.)		
*Leakage Current is determined by the line to ground capacitors in the filter. The capacitors can be easily varied to match the system leakage requirements.		

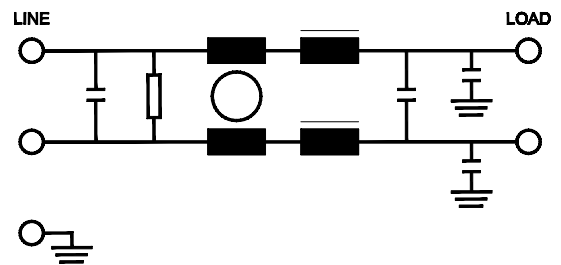
**TYPICAL INSERTION LOSS, dB
(50/50ohm)**

FREQ (MHz)	.01	.15	.5	1	10	30
CM(dB)	16	32	50	50	45	30
DM(dB)	22	42	60	60	40	30

PART NUMBER/ ORDERING

RPM7050	-X (Amps)	-T
	5	S
	10	
	20	
	30	

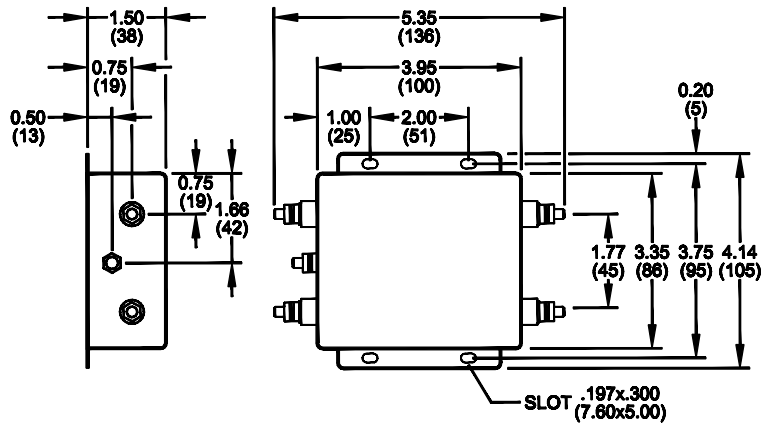
SCHEMATIC



Reference purposes only.
Specifications are subject to change.
Consult factory to verify specifications.

RPM7050
Mechanical Dimensions

5/10/20/30Amp



TYPICAL TOLERANCE: +/-0.02 (0.50)

Reference purposes only.
 Specifications are subject to change.
 Consult factory to verify specifications.