

**RPTC2011-100**

**TEMPEST/COTS AC 1PH EMI Power Line Filter**

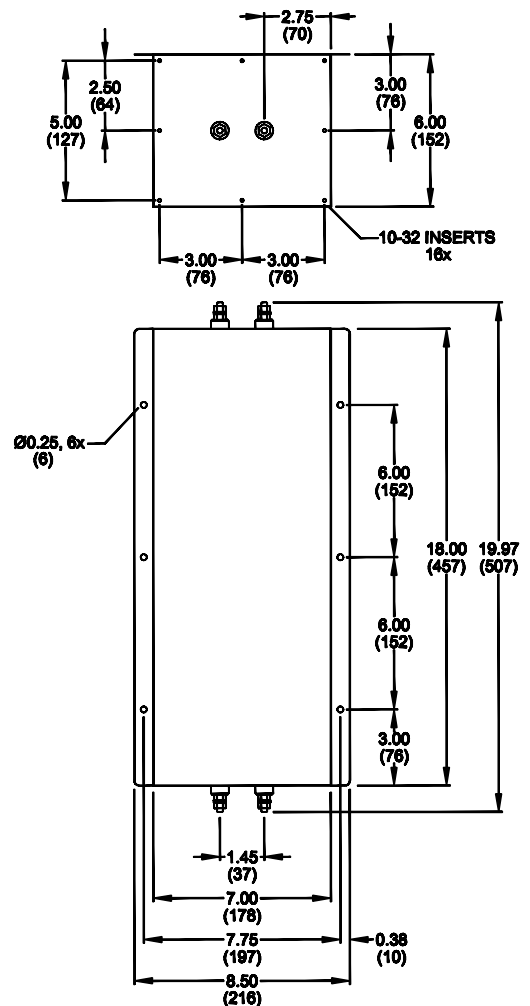
**RPTC2011-100  
TEMPEST/ COTS  
100A, 100dB  
14K - 10GHz**



### SPECIFICATIONS

|                        |                              |
|------------------------|------------------------------|
| Operating Freq.        | : 47-63Hz                    |
| Max. Operating Voltage | : 300VAC                     |
| Ambient Temperature    | : -40 to 70C                 |
| Hipot Rating (L-G)     | : 1500VDC                    |
| Terminals (-T)         | : S: 1/4-20                  |
| Applications           | : TEMPEST/Mil-461/<br>DO-160 |
| Typ. Weight, LBS (KG)  | : 50.00 (22.68)              |

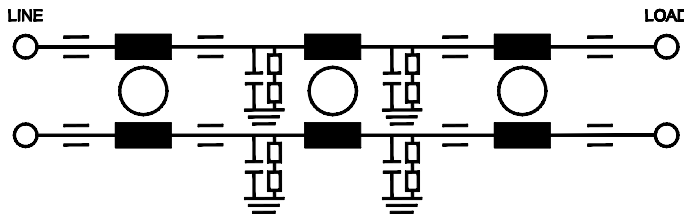
### MECHANICAL



TYPICAL TOLERANCE: +/-0.02 (0.50)

[www.radiuspower.com](http://www.radiuspower.com)

### SCHEMATIC



Reference purposes only.  
Specifications are subject to change.  
Consult factory to verify specifications.