

RPTC2012-60

TEMPEST/COTS AC 3PH WYE, 480V EMI Power Line Filter

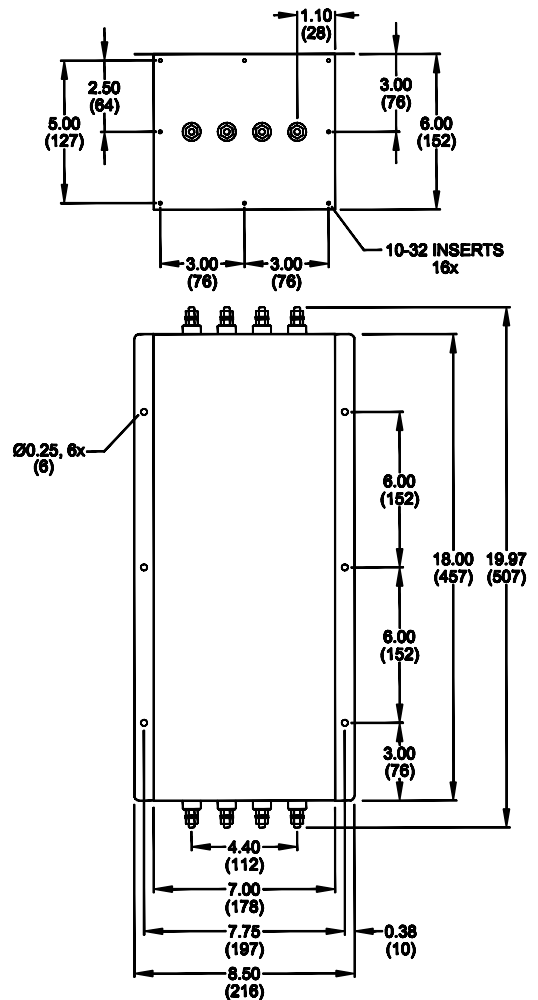
RPTC2012-60
TEMPEST/ COTS
3 PHASE WYE, 60A, 480V
100dB
14K - 10GHz



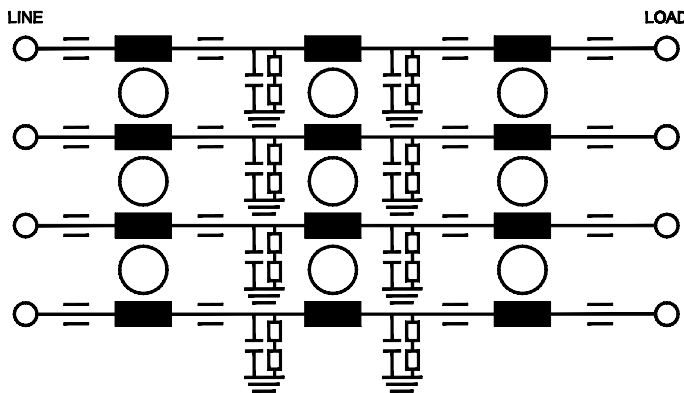
SPECIFICATIONS

Operating Freq.	: 47-63Hz
Max. Operating Voltage	: 480VAC
Ambient Temperature	: -40 to 70C
Hipot Rating (L-G)	: 1500VDC
Terminals (-T)	: S: 1/4-20
Applications	: TEMPEST/Mil-461/ DO-160
Typ. Weight, LBS (KG)	: 50.00 (22.68)

MECHANICAL



SCHEMATIC



Reference purposes only.
 Specifications are subject to change.
 Consult factory to verify specifications.

TYPICAL TOLERANCE: +/-0.02 (0.50)

www.radiuspower.com

Engineering Assistance: engg@radiuspower.com
 Sales: sales@radiuspower.com